



# AGRODRIP

*Every drop matters!*



## IRRIGATION SYSTEMS

DESIGN | EQUIPMENT | INSTALLATION | SERVICE

[www.agrodrip.az](http://www.agrodrip.az)

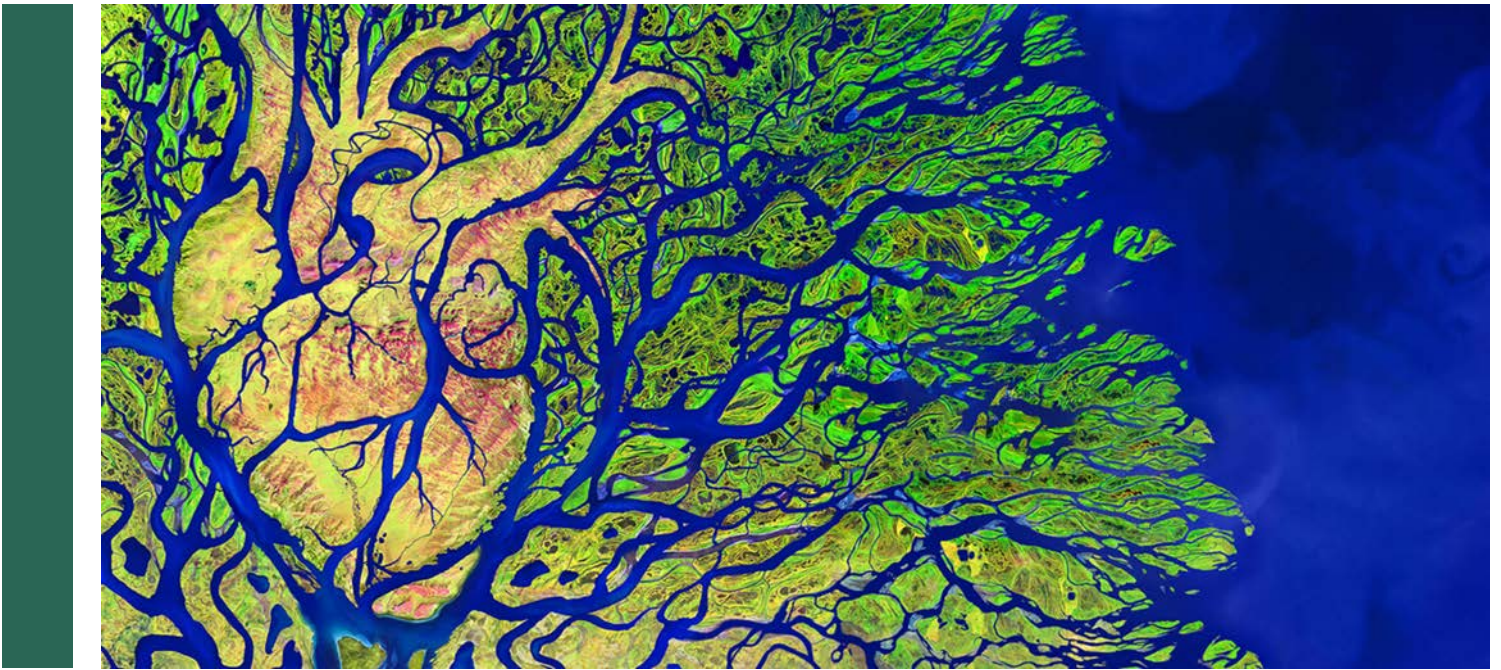
**2025** TECHNICAL  
CATALOGUE

Agrodrip LLC specializes in the field of agricultural irrigation systems. The company implements turnkey orders, providing design, supply, installation, and maintenance services.

*Traditional methods of irrigation are a thing of the past*

## COMPLEX SOLUTIONS FOR AGRICULTURAL IRRIGATION SYSTEMS





## FROM THE FOUNDER

AGRODRIP is one of the leading brands in the irrigation systems sector. Our company offers modern equipment and innovative solutions for more correct and efficient use of the most valuable resource in the universe.

In a rapidly globalizing world, we are faced with three serious problems: water shortage, reduction in useful arable land and increasing food demand. The solution to each of these is very important for the future of the planet we live in. Smart irrigation is coming to the fore precisely to eliminate these threats. Thus, our goal is very clear - to make our contribution to making modern irrigation systems accessible and effective.

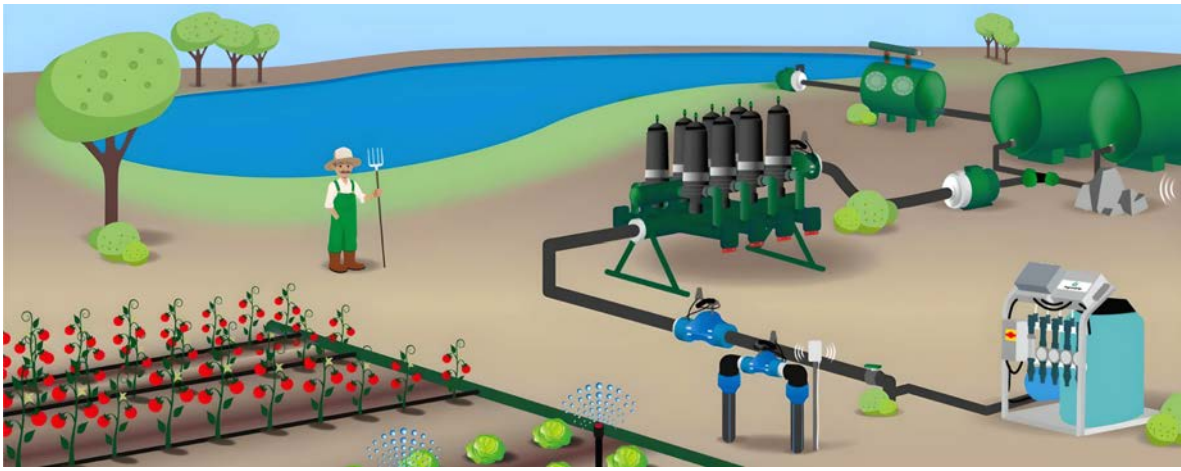
Our team, formed by highly qualified professionals, is able to meet customer requirements in a comprehensive manner, including design, supply, installation, and maintenance services. Our main advantage is our extensive experience and the trust we have earned in the sector we operate in. Customer satisfaction is a priority for us.

By contacting us, you will find quality products and affordable prices in one place. The most modern equipment manufactured by world-renowned companies will significantly reduce your farm costs and increase productivity.

Traditional methods of irrigation are a thing of the past. The water shortage in the world is pushing us to adopt the motto "Every drop matters".

AGRODRIP will be your best guide on the way to achieving better quality and higher productivity with fewer resources. Let's walk together towards a successful future!

*Sincerely,  
Elshad Agakishiyev*



## ABOUT US

Agrodrip LLC specializes in the field of agricultural irrigation systems. The company implements turnkey orders, providing design, supply, installation, and maintenance services.

**Design:** With our team of highly qualified specialists, we apply an individual approach to customer requirements and needs. First, we conduct a professional inspection of the area and analyze the characteristics and requirements of the site. Based on these analyses, we prepare an effective, but also optimal project. Each project is aimed at ensuring maximum efficiency of irrigation systems and economical use of resources.

**Equipment:** Providing quality equipment is an important condition for the effective and sustainable operation of irrigation systems. Our supply chain includes the most modern irrigation systems from world-renowned and reliable manufacturers. Equipment and spare parts manufactured by foreign companies such as Turkey, the USA, China, Italy, as well as local enterprises, are presented to customers in our sales centers.

**Installation:** Our company's installation team consists of qualified engineers and experienced professionals in the relevant field. Using modern installation technologies and methods, we provide customers with the highest quality. In accordance with the contract, we pay special attention to the implementation of our work in full compliance with safety and quality standards in each installation process.

**Service:** We stay in touch with our customers even after installation, providing them with training and long-term technical support. To ensure the long-term and stable operation of irrigation systems, we regularly conduct technical inspections, update equipment, and promptly eliminate possible problems.

Thus, by cooperating with us, you can benefit from the advantages of modern irrigation systems and professional services. The innovative solutions we offer will allow you to increase productivity and reduce costs. We guarantee quality and satisfaction by individually approaching the needs of each customer!



# POLYETHYLENE PIPES



## PE100 PIPES

SDR	41 SDR		33 SDR		26 SDR		21 SDR		17 SDR		13,6 SDR		11 SDR		9 SDR	
PN	PN 4		PN 5		PN 6		PN 8		PN 10		PN 12,5		PN 16		PN 20	
DN	S	kg/m	S	kg/m	S	kg/m	S	kg/m	S	kg/m	S	kg/m	S	kg/m	S	kg/m
20									1.18	0.07	1.47	0.09	2.0	0.12	2.3	0.13
25									2.0	0.11	2.0	0.15	2.3	0.17	3.0	0.22
32									2.0	0.20	2.4	0.23	3.0	0.29	3.6	0.34
40							2.0	0.24	2.4	0.30	3.0	0.36	3.7	0.44	4.5	0.52
50					2.0	0.30	2.4	0.36	3.0	0.46	3.7	0.56	4.6	0.69	5.6	0.82
63			2.0	0.38	2.3	0.44	3.0	0.56	3.8	0.74	4.7	0.90	5.8	1.09	7.1	1.30
75			2.3	0.56	2.9	0.65	3.6	0.80	4.5	1.01	5.6	1.24	6.8	1.48	8.4	1.79
90	2.3	0.62	2.8	0.72	3.3	0.89	4.3	1.14	5.4	1.46	6.7	1.78	8.2	2.14	10.1	2.58
110	2.7	0.92	3.4	1.13	4.0	1.32	5.3	1.72	6.6	2.18	8.1	2.64	10.0	3.19	12.3	3.84
125	3.1	1.19	3.9	1.46	4.5	1.68	6.0	2.21	7.4	2.78	9.2	3.4	11.4	4.14	14.0	4.96
140	3.5	1.49	4.3	1.81	5.1	2.13	6.7	2.76	8.3	3.49	10.3	4.27	12.7	5.16	15.7	6.23
160	4.0	1.95	4.9	2.35	5.8	2.77	7.7	3.63	9.5	4.57	11.8	5.59	14.6	6.78	17.9	8.12
180	4.4	2.46	5.5	2.97	6.93	3.49	8.6	4.56	10.7	5.79	13.3	7.08	16.4	8.57	20.1	10.26
200	4.9	3.04	6.2	3.72	7.73	4.35	9.6	5.65	11.9	7.15	14.7	8.7	18.2	10.57	22.4	12.71
225	5.5	3.85	6.9	4.66	8.2	5.50	10.8	7.15	13.4	9.06	16.6	11.05	20.5	13.39	25.2	16.08
250	6.2	4.75	7.7	5.77	9.1	6.78	11.9	8.76	14.8	11.12	18.4	13.61	22.7	16.48	27.9	19.79
280	6.9	5.96	8.6	7.22	10.2	8.51	13.4	10.04	16.6	13.96	20.6	17.07	25.4	20.65	31.3	24.86
315	7.7	7.54	9.7	9.16	11.4	10.70	15.0	13.91	18.7	17.7	23.2	21.62	28.6	26.16	35.2	31.46
355	8.7	9.58	10.9	11.83	13.6	14.83	16.9	18.25	21.1	22.5	26.1	27.42	32.2	33.2	39.7	39.98
400	9.8	12.16	12.3	15.02	15.3	18.8	19.1	23.24	23.7	28.48	29.4	34.8	36.3	42.17	44.7	50.72
450	11.0	15.39	13.8	19.0	17.2	23.78	21.5	29.42	26.7	36.1	33.1	44.07	40.9	53.44	50.3	64.21
500	12.3	19.0	15.3	23.46	19.1	29.34	23.9	36.34	29.7	44.61	36.8	54.44	45.4	65.92	55.8	79.16
560	13.7	23.83	17.2	29.43	21.4	36.81	26.7	45.48	33.2	55.86	41.2	68.27	50.8	82.62	62.5	99.31
630	15.4	30.16	19.3	37.25	24.1	46.64	30.0	57.49	37.4	70.79	46.3	86.31	57.2	104.6	70.3	125.7
710	17.4	38.31	21.8	47.31	27.2	59.32	33.9	73.2	42.1	89.81	52.2	109.7	64.5	133.0	79.3	159.7
800	19.6	48.64	24.5	60.06	30.6	75.19	38.1	92.71	47.4	113.9	58.8	139.2	72.6	168.7	89.3	202.7

# INJECTION FITTINGS



**ELBOW 45°**

DIAMETER	PRESSURE
mm	bar
20	PN 16
25	PN 16
32	PN 16
40	PN 16
50	PN 16
63	PN 16
75	PN 16
90	PN 10 - PN 16
110	PN 10 - PN 16
125	PN 10 - PN 16
140	PN 10 - PN 16
160	PN 10 - PN 16
180	PN 10 - PN 16
200	PN 10 - PN 16
225	PN 10 - PN 16
250	PN 10 - PN 16
280	PN 10 - PN 16
315	PN 10 - PN 16
355	PN 10 - PN 16
400	PN 10 - PN 16



**ELBOW 90°**

DIAMETER	PRESSURE
mm	bar
20	PN 16
25	PN 16
32	PN 16
40	PN 16
50	PN 16
63	PN 16
75	PN 16
90	PN 10 - PN 16
110	PN 10 - PN 16
125	PN 10 - PN 16
140	PN 10 - PN 16
160	PN 10 - PN 16
180	PN 10 - PN 16
200	PN 10 - PN 16
225	PN 10 - PN 16
250	PN 10 - PN 16
280	PN 10 - PN 16
315	PN 10 - PN 16
355	PN 10 - PN 16
400	PN 10 - PN 16



**EQUAL TEE**

DIAMETER	PRESSURE
mm	bar
20	PN 16
25	PN 16
32	PN 16
40	PN 16
50	PN 16
63	PN 16
75	PN 16
90	PN 10 - PN 16
110	PN 10 - PN 16
125	PN 10 - PN 16
140	PN 10 - PN 16
160	PN 10 - PN 16
180	PN 10 - PN 16
200	PN 10 - PN 16
225	PN 10 - PN 16
250	PN 10 - PN 16
280	PN 10 - PN 16
315	PN 10 - PN 16
355	PN 10 - PN 16
400	PN 10 - PN 16



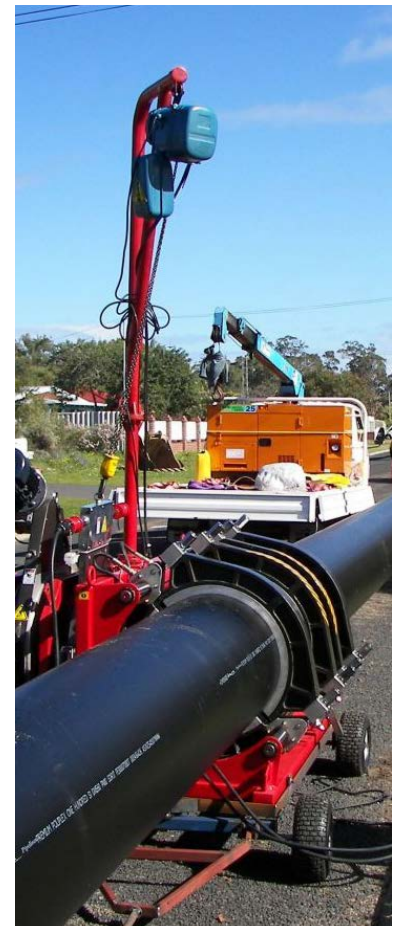
**CAP**

DIAMETER	PRESSURE
mm	bar
20	PN 16
25	PN 16
32	PN 16
40	PN 16
50	PN 16
63	PN 16
75	PN 16
90	PN 10 - PN 16
110	PN 10 - PN 16
125	PN 10 - PN 16
140	PN 10 - PN 16
160	PN 10 - PN 16
180	PN 10 - PN 16
200	PN 10 - PN 16
225	PN 10 - PN 16
250	PN 10 - PN 16
280	PN 10 - PN 16
315	PN 10 - PN 16
355	PN 10 - PN 16
400	PN 10 - PN 16



**FLANGE ADAPTER**

DIAMETER	PRESSURE
mm	bar
20	PN 16
25	PN 16
32	PN 16
40	PN 16
50	PN 16
63	PN 16
75	PN 16
90	PN 10 - PN 16
110	PN 10 - PN 16
125	PN 10 - PN 16
140	PN 10 - PN 16
160	PN 10 - PN 16
180	PN 10 - PN 16
200	PN 10 - PN 16
225	PN 10 - PN 16
250	PN 10 - PN 16
280	PN 10 - PN 16
315	PN 10 - PN 16
355	PN 10 - PN 16
400	PN 10 - PN 16



# INJECTION FITTINGS

## REDUCER

DIAMETER	PRESSURE
mm	bar
25 x 20	PN 16
32 x 20	PN 16
32 x 25	PN 16
40 x 20	PN 16
40 x 25	PN 16
40 x 32	PN 16
50 x 20	PN 16
50 x 25	PN 16
50 x 32	PN 16
50 x 40	PN 16
63 x 20	PN 16
63 x 25	PN 16
63 x 32	PN 16
63 x 40	PN 16
63 x 50	PN 16
75 x 32	PN 16
75 x 40	PN 16
75 x 50	PN 16
75 x 63	PN 16
90 x 32	PN 10 - PN 16
90 x 50	PN 10 - PN 16
90 x 63	PN 10 - PN 16
90 x 75	PN 10 - PN 16
110 x 25	PN 10 - PN 16
110 x 32	PN 10 - PN 16
110 x 50	PN 10 - PN 16
110 x 63	PN 10 - PN 16
110 x 75	PN 10 - PN 16
110 x 90	PN 10 - PN 16
125 x 25	PN 10 - PN 16
125 x 63	PN 10 - PN 16
125 x 75	PN 10 - PN 16
125 x 90	PN 10 - PN 16
125 x 110	PN 10 - PN 16
140 x 75	PN 10 - PN 16
140 x 90	PN 10 - PN 16
140 x 110	PN 10 - PN 16
140 x 125	PN 10 - PN 16
160 x 90	PN 10 - PN 16
160 x 110	PN 10 - PN 16
160 x 125	PN 10 - PN 16
160 x 140	PN 10 - PN 16
180 x 90	PN 10 - PN 16
180 x 110	PN 10 - PN 16
180 x 125	PN 10 - PN 16
180 x 140	PN 10 - PN 16
180 x 160	PN 10 - PN 16
200 x 110	PN 10 - PN 16
200 x 125	PN 10 - PN 16
200 x 140	PN 10 - PN 16
200 x 160	PN 10 - PN 16
200 x 180	PN 10 - PN 16
225 x 110	PN 10 - PN 16
225 x 125	PN 10 - PN 16
225 x 140	PN 10 - PN 16
225 x 160	PN 10 - PN 16
225 x 180	PN 10 - PN 16
225 x 200	PN 10 - PN 16
250 x 125	PN 10 - PN 16
250 x 160	PN 10 - PN 16
250 x 180	PN 10 - PN 16
250 x 200	PN 10 - PN 16
250 x 225	PN 10 - PN 16
280 x 200	PN 10 - PN 16
280 x 225	PN 10 - PN 16
280 x 250	PN 10 - PN 16
315 x 125	PN 10 - PN 16
315 x 160	PN 10 - PN 16
315 x 180	PN 10 - PN 16
315 x 200	PN 10 - PN 16
315 x 225	PN 10 - PN 16
315 x 250	PN 10 - PN 16
315 x 280	PN 10 - PN 16
355 x 125	PN 10 - PN 16
355 x 200	PN 10 - PN 16
355 x 250	PN 10 - PN 16
355 x 280	PN 10 - PN 16
355 x 315	PN 10 - PN 16
400 x 200	PN 10 - PN 16
400 x 250	PN 10 - PN 16
400 x 315	PN 10 - PN 16
400 x 355	PN 10 - PN 16



## REDUCED TEE

DIAMETER	PRESSURE
mm	bar
32 x 20	PN 16
32 x 25	PN 16
40 x 20	PN 16
40 x 25	PN 16
40 x 32	PN 16
50 x 25	PN 16
50 x 32	PN 16
63 x 25	PN 16
63 x 32	PN 16
63 x 40	PN 16
63 x 50	PN 16
75 x 32	PN 16
75 x 50	PN 16
75 x 63	PN 16
75 x 50	PN 16
75 x 63	PN 16
90 x 20	PN 10 - PN 16
90 x 25	PN 10 - PN 16
90 x 32	PN 10 - PN 16
90 x 40	PN 10 - PN 16
90 x 50	PN 10 - PN 16
90 x 63	PN 10 - PN 16
90 x 75	PN 10 - PN 16
110 x 25	PN 10 - PN 16
110 x 32	PN 10 - PN 16
110 x 40	PN 10 - PN 16
110 x 50	PN 10 - PN 16
110 x 63	PN 10 - PN 16
110 x 75	PN 10 - PN 16
110 x 90	PN 10 - PN 16
125 x 32	PN 10 - PN 16
125 x 63	PN 10 - PN 16
125 x 75	PN 10 - PN 16
125 x 90	PN 10 - PN 16
125 x 110	PN 10 - PN 16
140 x 63	PN 10 - PN 16
140 x 90	PN 10 - PN 16
140 x 110	PN 10 - PN 16
140 x 125	PN 10 - PN 16
160 x 25	PN 10 - PN 16
160 x 32	PN 10 - PN 16
160 x 50	PN 10 - PN 16
160 x 63	PN 10 - PN 16
160 x 75	PN 10 - PN 16
160 x 90	PN 10 - PN 16
160 x 110	PN 10 - PN 16
160 x 125	PN 10 - PN 16
160 x 140	PN 10 - PN 16
180 x 90	PN 10 - PN 16
180 x 110	PN 10 - PN 16
180 x 125	PN 10 - PN 16
180 x 140	PN 10 - PN 16
200 x 50	PN 10 - PN 16
200 x 63	PN 10 - PN 16
200 x 75	PN 10 - PN 16
200 x 90	PN 10 - PN 16
200 x 110	PN 10 - PN 16
200 x 125	PN 10 - PN 16
200 x 160	PN 10 - PN 16
200 x 180	PN 10 - PN 16
225 x 90	PN 10 - PN 16
225 x 110	PN 10 - PN 16
225 x 125	PN 10 - PN 16
225 x 160	PN 10 - PN 16
250 x 50	PN 10 - PN 16
250 x 63	PN 10 - PN 16
250 x 75	PN 10 - PN 16
250 x 90	PN 10 - PN 16
250 x 110	PN 10 - PN 16
250 x 125	PN 10 - PN 16
250 x 140	PN 10 - PN 16
250 x 160	PN 10 - PN 16
250 x 200	PN 10 - PN 16
280 x 110	PN 10 - PN 16
280 x 160	PN 10 - PN 16
280 x 200	PN 10 - PN 16
315 x 90	PN 10 - PN 16
315 x 110	PN 10 - PN 16
315 x 140	PN 10 - PN 16
315 x 160	PN 10 - PN 16
315 x 200	PN 10 - PN 16
315 x 225	PN 10 - PN 16
315 x 250	PN 10 - PN 16
355 x 110	PN 10 - PN 16
355 x 160	PN 10 - PN 16
355 x 250	PN 10 - PN 16
355 x 280	PN 10 - PN 16
400 x 110	PN 10 - PN 16
400 x 160	PN 10 - PN 16
400 x 250	PN 10 - PN 16
400 x 315	PN 10 - PN 16



# ELECTROFUSION FITTINGS



**ELBOW 45°**

DIAMETER	PRESSURE
mm	bar
20	PN 16
25	PN 16
32	PN 16
40	PN 16
50	PN 16
63	PN 16
75	PN 16
90	PN 10 - PN 16
110	PN 10 - PN 16
125	PN 10 - PN 16
140	PN 10 - PN 16
160	PN 10 - PN 16
180	PN 10 - PN 16
200	PN 10 - PN 16
225	PN 10 - PN 16
250	PN 10 - PN 16
280	PN 10 - PN 16
315	PN 10 - PN 16
355	PN 10 - PN 16
400	PN 10 - PN 16



**ELBOW 90°**

DIAMETER	PRESSURE
mm	bar
20	PN 16
25	PN 16
32	PN 16
40	PN 16
50	PN 16
63	PN 16
75	PN 16
90	PN 10 - PN 16
110	PN 10 - PN 16
125	PN 10 - PN 16
140	PN 10 - PN 16
160	PN 10 - PN 16
180	PN 10 - PN 16
200	PN 10 - PN 16
225	PN 10 - PN 16
250	PN 10 - PN 16
280	PN 10 - PN 16
315	PN 10 - PN 16
355	PN 10 - PN 16
400	PN 10 - PN 16



**COUPLE**

DIAMETER	PRESSURE
mm	bar
20	PN 16
25	PN 16
32	PN 16
40	PN 16
50	PN 16
63	PN 16
75	PN 16
90	PN 10 - PN 16
110	PN 10 - PN 16
125	PN 10 - PN 16
140	PN 10 - PN 16
160	PN 10 - PN 16
180	PN 10 - PN 16
200	PN 10 - PN 16
225	PN 10 - PN 16
250	PN 10 - PN 16
280	PN 10 - PN 16
315	PN 10 - PN 16
355	PN 10 - PN 16
400	PN 10 - PN 16



**EQUAL TEE**

DIAMETER	PRESSURE
mm	bar
20	PN 16
25	PN 16
32	PN 16
40	PN 16
50	PN 16
63	PN 16
75	PN 16
90	PN 10 - PN 16
110	PN 10 - PN 16
125	PN 10 - PN 16
140	PN 10 - PN 16
160	PN 10 - PN 16
180	PN 10 - PN 16
200	PN 10 - PN 16
225	PN 10 - PN 16
250	PN 10 - PN 16
280	PN 10 - PN 16
315	PN 10 - PN 16
355	PN 10 - PN 16
400	PN 10 - PN 16



**CAP**

DIAMETER	PRESSURE
mm	bar
20	PN 16
25	PN 16
32	PN 16
40	PN 16
50	PN 16
63	PN 16
75	PN 16
90	PN 10 - PN 16
110	PN 10 - PN 16
125	PN 10 - PN 16
140	PN 10 - PN 16
160	PN 10 - PN 16
180	PN 10 - PN 16
200	PN 10 - PN 16
225	PN 10 - PN 16
250	PN 10 - PN 16
280	PN 10 - PN 16
315	PN 10 - PN 16
355	PN 10 - PN 16
400	PN 10 - PN 16





# ELECTROFUSION FITTINGS

## REDUCER

DIAMETER	PRESSURE
mm	bar
25 x 20	PN 16
32 x 20	PN 16
32 x 25	PN 16
40 x 20	PN 16
40 x 25	PN 16
40 x 32	PN 16
50 x 25	PN 16
50 x 32	PN 16
50 x 40	PN 16
63 x 20	PN 16
63 x 25	PN 16
63 x 32	PN 16
63 x 40	PN 16
63 x 50	PN 16
75 x 20	PN 16
75 x 25	PN 16
75 x 40	PN 16
75 x 50	PN 16
75 x 63	PN 16
90 x 25	PN 10 - PN 16
90 x 32	PN 10 - PN 16
90 x 40	PN 10 - PN 16
90 x 50	PN 10 - PN 16
90 x 63	PN 10 - PN 16
90 x 75	PN 10 - PN 16
110 x 50	PN 10 - PN 16
110 x 63	PN 10 - PN 16
110 x 75	PN 10 - PN 16
110 x 90	PN 10 - PN 16
125 x 50	PN 10 - PN 16
125 x 63	PN 10 - PN 16
125 x 75	PN 10 - PN 16
125 x 90	PN 10 - PN 16
125 x 110	PN 10 - PN 16
140 x 90	PN 10 - PN 16
140 x 110	PN 10 - PN 16
140 x 125	PN 10 - PN 16
160 x 63	PN 10 - PN 16
160 x 75	PN 10 - PN 16
160 x 90	PN 10 - PN 16
160 x 110	PN 10 - PN 16
160 x 125	PN 10 - PN 16
160 x 140	PN 10 - PN 16
180 x 110	PN 10 - PN 16
180 x 125	PN 10 - PN 16
180 x 140	PN 10 - PN 16
180 x 160	PN 10 - PN 16
200 x 63	PN 10 - PN 16
200 x 75	PN 10 - PN 16
200 x 90	PN 10 - PN 16
200 x 110	PN 10 - PN 16
200 x 125	PN 10 - PN 16
200 x 140	PN 10 - PN 16
200 x 160	PN 10 - PN 16
200 x 180	PN 10 - PN 16
225 x 110	PN 10 - PN 16
225 x 125	PN 10 - PN 16
225 x 140	PN 10 - PN 16
225 x 160	PN 10 - PN 16
225 x 180	PN 10 - PN 16
225 x 200	PN 10 - PN 16
250 x 75	PN 10 - PN 16
250 x 160	PN 10 - PN 16
250 x 180	PN 10 - PN 16
250 x 200	PN 10 - PN 16
250 x 225	PN 10 - PN 16
280 x 110	PN 10 - PN 16
280 x 140	PN 10 - PN 16
280 x 200	PN 10 - PN 16
280 x 225	PN 10 - PN 16
280 x 250	PN 10 - PN 16
315 x 160	PN 10 - PN 16
315 x 180	PN 10 - PN 16
315 x 200	PN 10 - PN 16
315 x 250	PN 10 - PN 16
315 x 280	PN 10 - PN 16
355 x 250	PN 10 - PN 16
355 x 280	PN 10 - PN 16
400 x 160	PN 10 - PN 16
400 x 250	PN 10 - PN 16
400 x 315	PN 10 - PN 16
400 x 355	PN 10 - PN 16



## REDUCED TEE

DIAMETER	PRESSURE
mm	bar
25 x 20	PN 16
32 x 20	PN 16
32 x 25	PN 16
40 x 20	PN 16
40 x 25	PN 16
40 x 32	PN 16
50 x 20	PN 16
50 x 25	PN 16
50 x 32	PN 16
50 x 40	PN 16
63 x 20	PN 16
63 x 25	PN 16
63 x 32	PN 16
63 x 40	PN 16
63 x 50	PN 16
75 x 32	PN 16
75 x 40	PN 16
75 x 50	PN 16
75 x 63	PN 16
90 x 20	PN 10 - PN 16
90 x 25	PN 10 - PN 16
90-32	PN 10 - PN 16
90 x 40	PN 10 - PN 16
90 x 50	PN 10 - PN 16
90 x 63	PN 10 - PN 16
90 x 75	PN 10 - PN 16
110 x 20	PN 10 - PN 16
110 x 25	PN 10 - PN 16
110 x 32	PN 10 - PN 16
110 x 40	PN 10 - PN 16
110 x 50	PN 10 - PN 16
110 x 63	PN 10 - PN 16
110 x 75	PN 10 - PN 16
110 x 90	PN 10 - PN 16
125 x 50	PN 10 - PN 16
125 x 63	PN 10 - PN 16
125 x 75	PN 10 - PN 16
125 x 90	PN 10 - PN 16
125 x 110	PN 10 - PN 16
140 x 50	PN 10 - PN 16
140 x 75	PN 10 - PN 16
140 x 90	PN 10 - PN 16
140 x 110	PN 10 - PN 16
140 x 125	PN 10 - PN 16
160 x 50	PN 10 - PN 16
160 x 63	PN 10 - PN 16
160 x 75	PN 10 - PN 16
160 x 90	PN 10 - PN 16
160 x 110	PN 10 - PN 16
160 x 125	PN 10 - PN 16
160 x 140	PN 10 - PN 16
180 x 90	PN 10 - PN 16
180 x 110	PN 10 - PN 16
180 x 125	PN 10 - PN 16
180 x 160	PN 10 - PN 16
200 x 63	PN 10 - PN 16
200 x 75	PN 10 - PN 16
200 x 90	PN 10 - PN 16
200 x 110	PN 10 - PN 16
200 x 125	PN 10 - PN 16
200 x 140	PN 10 - PN 16
200 x 160	PN 10 - PN 16
200 x 180	PN 10 - PN 16
225 x 110	PN 10 - PN 16
225 x 160	PN 10 - PN 16
225 x 200	PN 10 - PN 16
250 x 90	PN 10 - PN 16
250 x 110	PN 10 - PN 16
250 x 125	PN 10 - PN 16
250 x 140	PN 10 - PN 16
250 x 160	PN 10 - PN 16
250 x 180	PN 10 - PN 16
280 x 110	PN 10 - PN 16
280 x 125	PN 10 - PN 16
280 x 160	PN 10 - PN 16
315 x 90	PN 10 - PN 16
315 x 110	PN 10 - PN 16
315 x 125	PN 10 - PN 16
315 x 160	PN 10 - PN 16
315 x 180	PN 10 - PN 16
315 x 200	PN 10 - PN 16
315 x 225	PN 10 - PN 16
315 x 250	PN 10 - PN 16
355 x 110	PN 10 - PN 16
355 x 125	PN 10 - PN 16
355 x 250	PN 10 - PN 16
400 x 250	PN 10 - PN 16



# STEEL FITTINGS



## STEEL FLANGE

DIAMETER	PRESSURE
mm / inch	bar
20	PN 16
25	PN 16
32	PN 16
40	PN 16
50	PN 16
63	PN 16
75	PN 16
90	PN 10 - PN 16
110	PN 10 - PN 16
125	PN 10 - PN 16
140	PN 10 - PN 16
160	PN 10 - PN 16
180	PN 10 - PN 16
200	PN 10 - PN 16
225	PN 10 - PN 16
250	PN 10 - PN 16
280	PN 10 - PN 16
315	PN 10 - PN 16
355	PN 10 - PN 16
400	PN 10 - PN 16



## PE-STEEL TRANSITION PIECE

DIAMETER	PRESSURE
mm / inch	bar
20 x 1/2"	PN 10
25 x 3/4"	PN 10
32 x 1"	PN 10
32 x 3/4"	PN 10
40 x 1 1/4"	PN 10
50 x 1 1/2"	PN 10
63 x 2"	PN 10
75 x 2 1/2"	PN 10
90 x 3"	PN 10 - PN 16
110 x 4"	PN 10 - PN 16

## PE-STEEL TRANSITION ADAPTOR MALE



DIAMETER	PRESSURE
mm / inch	bar
20 x 1/2"	PN 16
25 x 1/2"	PN 16
25 x 3/4"	PN 16
32 x 3/4"	PN 16
32 x 1"	PN 16
32 x 1/2"	PN 16
40 x 1 1/4"	PN 16
50 x 1 1/2"	PN 16
63 x 2"	PN 16
75 x 2 1/2"	PN 16
90 x 3"	PN 10 - PN 16
110 x 4"	PN 10 - PN 16



## PE-STEEL TRANSITION ADAPTOR FEMALE

DIAMETER	PRESSURE
mm / inch	bar
20 x 1/2"	PN 16
25 x 3/4"	PN 16
40 x 1 1/4"	PN 16
50 x 1 1/2"	PN 16
63 x 2"	PN 16
75 x 2 1/2"	PN 16
90 x 3"	PN 10 - PN 16
110 x 4"	PN 10 - PN 16

## STEEL-PE TRANSITION PIECE



DIAMETER	PRESSURE
mm / inch	bar
125 x 4"	PN 10 - PN 16
125 x 6"	PN 10 - PN 16
180 x 6"	PN 10 - PN 16
200 x 8"	PN 10 - PN 16
225 x 8"	PN 10 - PN 16
250 x 10"	PN 10 - PN 16
280 x 10"	PN 10 - PN 16
315 x 12"	PN 10 - PN 16
355 x 14"	PN 10 - PN 16
400 x 16"	PN 10 - PN 16



## PE-STEEL TRANSITION PIECE

DIAMETER	PRESSURE
mm / inch	bar
20 x 1/2"	PN 10
25 x 3/4"	PN 10
32 x 1"	PN 10
32 x 3/4"	PN 10
40 x 1 1/4"	PN 10
50 x 1 1/2"	PN 10
63 x 2"	PN 10
75 x 2 1/2"	PN 10
90 x 3"	PN 10 - PN 16
110 x 4"	PN 10 - PN 16

# CORRUGATED PIPES AND FITTINGS



## CORRUGATED PIPES

DIAMETER	SPECIFICATIONS
Outer diameter (mm)	50, 75, 110, 150, 200, 250, 300, 400, 500, 630, 800, 1000, 1200
Inner diameter (mm)	45, 60, 95, 140, 175, 220, 298, 370, 457, 575, 735, 920, 1100
Wall thickness (mm)	2.5 - 10 mm (depending on diameter)
Nominal pressure (kPa)	2.5, 4, 8 kPa
Pipe length (m)	6 m (flat) or in rolls (from 10 m to 50 m)
Material	HDPE (Polyethylene) or PP (Polypropylene)
Color	black, red or blue (external); white, blue or yellow (internal)
Temperature range (°C)	30°C to +60°C
Construction	single, double, corrugated outer layer and smooth inner layer
Connection type	connection with coupling or rubber ring
Service life	50 - 100 years



ELBOW 45°

DIAMETER
mm
110
150
250
300
400
500
600
800
1000



ELBOW 90°

DIAMETER
mm
110
150
250
300
400
500
600
800
1000



TEE

DIAMETER
mm
110
150
250
300
400
500
600
800
1000



COUPLE

DIAMETER
mm
110
150
250
300
400
500
600
800
1000

# COMPRESSION FITTINGS

## CAP



DIAMETER	
mm / inch	
20	
25	
32	
40	
50	
63	
75	
90	
110	

## COUPLING



DIAMETER	
mm	
20 x 20	
25 x 25	
32 x 32	
40 x 40	
50 x 50	
63 x 63	
75 x 75	
90 x 90	
110 x 110	

## ELBOW MALE



DIAMETER	
mm / inch	
20 x 1/2"	
20 x 3/4"	
25 x 1/2"	
25 x 3/4"	
25 x 1"	
32 x 3/4"	
32 x 1"	
32 x 1 1/4"	
40 x 1"	
40 x 1 1/4"	
40 x 1 1/2"	
50 x 1 1/4"	
50 x 1 1/2"	
50 x 2"	
63 x 1 1/2"	
63 x 2"	
63 x 2 1/2"	
75 x 2"	
75 x 2 1/2"	
75 x 3"	
90 x 2 1/2"	
90 x 3"	
90 x 4"	
110 x 3"	
110 x 4"	

## ELBOW FEMALE



DIAMETER	
mm / inch	
20 x 1/2"	
20 x 3/4"	
25 x 1/2"	
25 x 3/4"	
25 x 1"	
32 x 3/4"	
32 x 1"	
32 x 1 1/4"	
40 x 1"	
40 x 1 1/4"	
40 x 1 1/2"	
50 x 1 1/4"	
50 x 1 1/2"	
50 x 2"	
63 x 1 1/2"	
63 x 2"	
63 x 2 1/2"	
75 x 2"	
75 x 2 1/2"	
75 x 3"	
90 x 2 1/2"	
90 x 3"	
90 x 4"	
110 x 3"	
110 x 4"	

## ELBOW



DIAMETER	
mm	
20 x 20	
25 x 25	
32 x 32	
40 x 40	
50 x 50	
63 x 63	
75 x 75	
90 x 90	
110 x 110	

## ELBOW REDUCING



DIAMETER	
mm	
25 x 20	
32 x 25	
40 x 32	
50 x 40	
63 x 50	
75 x 50	
75 x 63	
90 x 63	
90 x 75	
110 x 90	



# COMPRESSION FITTINGS

## ADAPTOR MALE



DIAMETER
mm / inch
20 x 1/2"
20 x 3/4"
25 x 1/2"
25 x 3/4"
25 x 1"
32 x 3/4"
32 x 1"
32 x 1 1/4"
40 x 1"
40 x 1 1/4"
40 x 1 1/2"
50 x 1 1/4"
50 x 1 1/2"
50 x 2"
63 x 1 1/2"
63 x 2"
63 x 2 1/2"
75 x 2"
75 x 2 1/2"
75 x 3"
90 x 2 1/2"
90 x 3"
90 x 4"
110 x 3"
110 x 4"



## ADAPTOR FEMALE

DIAMETER
mm / inch
20 x 1/2"
20 x 3/4"
25 x 1/2"
25 x 3/4"
25 x 1"
32 x 3/4"
32 x 1"
32 x 1 1/4"
40 x 1"
40 x 1 1/4"
40 x 1 1/2"
50 x 1 1/4"
50 x 1 1/2"
50 x 2"
63 x 1 1/2"
63 x 2"
63 x 2 1/2"
75 x 2"
75 x 2 1/2"
75 x 3"
90 x 2 1/2"
90 x 3"
90 x 4"
110 x 3"
110 x 4"

## COUPLING REDUCING



DIAMETER
mm
25 x 20
32 x 20
32 x 25
40 x 20
40 x 25
40 x 32
50 x 25
50 x 32
50 x 40
63 x 25
63 x 32
63 x 40
63 x 50
75 x 50
75 x 63
90 x 63
90 x 75
110 x 63
110 x 75
110 x 90



## TEE

DIAMETER
mm
20 x 20 x 20
25 x 25 x 25
32 x 32 x 32
40 x 40 x 40
50 x 50 x 50
63 x 63 x 63
75 x 75 x 75
90 x 90 x 90
110 x 110 x 110

## FLANGED ADAPTOR



DIAMETER
mm
50 x 2"
63 x 2"
75 x 3"
90 x 4"
110 x 4"



## TEE REDUCING

DIAMETER
mm
25 x 20 x 25
25 x 32 x 25
32 x 20 x 32
32 x 25 x 32
40 x 25 x 40
40 x 32 x 40
50 x 25 x 50
50 x 32 x 50
50 x 40 x 50
63 x 25 x 63
63 x 32 x 63
63 x 40 x 63
63 x 50 x 63
75 x 50 x 75
75 x 63 x 75
90 x 63 x 90
90 x 75 x 90
110 x 63 x 110
110 x 75 x 110
110 x 90 x 110

# COMPRESSION FITTINGS

## TEE FEMALE



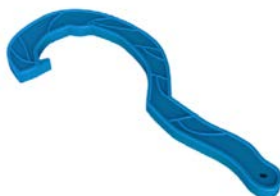
DIAMETER	
mm	inch / mm
20	1/2" x 20
20	3/4" x 20
25	1/2" x 25
25	3/4" x 25
25	1" x 25
32	1/2" x 32
32	3/4" x 32
32	1" x 32
32	1 1/4" x 32
40	3/4" x 40
40	1" x 40
40	1 1/2" x 40
50	3/4" x 50
50	1" x 50
50	1 1/4" x 50
50	1 1/2" x 50
50	2" x 50
63	1" x 63
63	1 1/4" x 63
63	1 1/2" x 63
63	2" x 63
63	2 1/2" x 63
75	2" x 75
75	2 1/2" x 75
75	3" x 75
90	2 1/2" x 90
90	3" x 90
90	4" x 90
110	3" x 110
110	4" x 110

## TEE MALE



DIAMETER	
mm	inch / mm
20	1/2" x 20
20	3/4" x 20
25	1/2" x 25
25	3/4" x 25
25	1" x 25
25	1 1/4" x 25
32	3/4" x 32
32	1" x 32
32	1 1/4" x 32
40	1" x 40
40	1 1/4" x 40
40	1 1/2" x 40
50	1" x 50
50	1 1/4" x 50
50	1 1/2" x 50
50	2" x 50
63	1 1/4" x 63
63	1 1/2" x 63
63	2" x 63
63	2 1/2" x 63
75	2" x 75
75	2 1/2" x 75
75	3" x 75
90	2 1/2" x 90
90	3" x 90
90	4" x 90
110	3" x 110
110	4" x 110

## FITTING SPANNER



DIAMETER	
mm	
32	63
75	110

## COUPLING REPAIRING



DIAMETER	
mm	
90	
110	



# CLAMP SADDLES

## CLAMP SADDLES

DIAMETER	PRESSURE
mm / inch	bar
25 x 1/2"	PN 10 - PN 16
25 x 3/4"	PN 10 - PN 16
32 x 1/2"	PN 10 - PN 16
32 x 3/4"	PN 10 - PN 16
32 x 1"	PN 10 - PN 16
40 x 1/2"	PN 10 - PN 16
40 x 3/4"	PN 10 - PN 16
40 x 1"	PN 10 - PN 16
50 x 1/2"	PN 10 - PN 16
50 x 3/4"	PN 10 - PN 16
50 x 1"	PN 10 - PN 16
50 x 1 1/4"	PN 10 - PN 16
63 x 1/2"	PN 10 - PN 16
63 x 3/4"	PN 10 - PN 16
63 x 1"	PN 10 - PN 16
63 x 1 1/4"	PN 10 - PN 16
63 x 1 1/2"	PN 10 - PN 16
75 x 1/2"	PN 10 - PN 16
75 x 3/4"	PN 10 - PN 16
75 x 1"	PN 10 - PN 16
75 x 1 1/4"	PN 10 - PN 16
75 x 1 1/2"	PN 10 - PN 16
75 x 2"	PN 10 - PN 16
90 x 1/2"	PN 10 - PN 16
90 x 3/4"	PN 10 - PN 16
90 x 1"	PN 10 - PN 16
90 x 1 1/4"	PN 10 - PN 16
90 x 1 1/2"	PN 10 - PN 16
90 x 2"	PN 10 - PN 16
110 x 1/2"	PN 10 - PN 16
110 x 3/4"	PN 10 - PN 16
110 x 1"	PN 10 - PN 16
110 x 1 1/4"	PN 10 - PN 16
110 x 1 1/2"	PN 10 - PN 16
110 x 2"	PN 10 - PN 16
125 x 1/2"	PN 10 - PN 16
125 x 3/4"	PN 10 - PN 16
125 x 1"	PN 10 - PN 16
125 x 1 1/4"	PN 10 - PN 16
125 x 1 1/2"	PN 10 - PN 16
125 x 2"	PN 10 - PN 16
140 x 1/2"	PN 10 - PN 16
140 x 3/4"	PN 10 - PN 16
140 x 1"	PN 10 - PN 16
140 x 1 1/4"	PN 10 - PN 16
140 x 1 1/2"	PN 10 - PN 16
140 x 2"	PN 10 - PN 16
160 x 1/2"	PN 10 - PN 16
160 x 3/4"	PN 10 - PN 16
160 x 1"	PN 10 - PN 16
160 x 1 1/4"	PN 10 - PN 16
160 x 1 1/2"	PN 10 - PN 16
160 x 2"	PN 10 - PN 16
160 x 2 1/2"	PN 10 - PN 16
160 x 3"	PN 10 - PN 16
160 x 4"	PN 10 - PN 16
180 x 3/4"	PN 10 - PN 16
180 x 1"	PN 10 - PN 16
180 x 1 1/4"	PN 10 - PN 16
180 x 1 1/2"	PN 10 - PN 16
180 x 2"	PN 10 - PN 16
180 x 2 1/2"	PN 10 - PN 16
180 x 3"	PN 10 - PN 16
180 x 4"	PN 10 - PN 16
200 x 3/4"	PN 10 - PN 16
200 x 1"	PN 10 - PN 16
200 x 1 1/4"	PN 10 - PN 16
200 x 1 1/2"	PN 10 - PN 16
200 x 2"	PN 10 - PN 16
200 x 2 1/2"	PN 10 - PN 16
200 x 3"	PN 10 - PN 16
200 x 4"	PN 10 - PN 16
225 x 1"	PN 10 - PN 16
225 x 1 1/4"	PN 10 - PN 16
225 x 1 1/2"	PN 10 - PN 16
225 x 2"	PN 10 - PN 16
225 x 2 1/2"	PN 10 - PN 16
225 x 3"	PN 10 - PN 16
225 x 4"	PN 10 - PN 16



# THREADED FITTINGS

## ELBOW MALE-FEMALE



DIAMETER
inch
1/2" x 1/2" x 1/2"
1/2" x 3/4" x 1/2"
3/4" x 1/2" x 3/4"
3/4" x 3/4" x 3/4"
3/4" x 1" x 3/4"
1" x 1/2" x 1"
1" x 3/4" x 1"
1" x 1" x 1"
1 1/4" x 3/4" x 1 1/4"
1 1/4" x 1" x 1 1/4"
1 1/2" x 1 1/4" x 1 1/2"
1 1/2" x 1 1/2" x 1 1/2"
2" x 1 1/4" x 2"
2" x 1 1/2" x 2"
2" x 2" x 2"
2 1/2" x 2 1/2" x 2 1/2"
3" x 3" x 3"
4" x 4" x 4"

## TEE MALE



DIAMETER
inch
1/2" x 1/2" x 1/2"
1/2" x 3/4" x 1/2"
3/4" x 1/2" x 3/4"
3/4" x 3/4" x 3/4"
3/4" x 1" x 3/4"
1" x 1/2" x 1"
1" x 3/4" x 1"
1" x 1" x 1"
1 1/4" x 1/2" x 1 1/4"
1 1/4" x 3/4" x 1 1/4"
1 1/4" x 1" x 1 1/4"
1 1/4" x 1 1/4" x 1 1/4"
1 1/2" x 1 1/2" x 1 1/2"
2" x 1 1/2" x 2"
2" x 2" x 2"
2 1/2" x 2 1/2" x 2 1/2"
3" x 3" x 3"
4" x 4" x 4"

## ELBOW MALE



DIAMETER
inch
1/2" x 1/2"
3/4" x 1/2"
3/4" x 3/4"
1" x 1/2"
1" x 3/4"
1" x 1"
1 1/4" x 1/2"
1 1/4" x 3/4"
1 1/4" x 1"
1 1/4" x 1 1/4"
1 1/2" x 1 1/2"
2" x 1 1/4"
2" x 1 1/2"
2" x 2"
2 1/2" x 2 1/2"
3" x 3"
4" x 4"

## TEE FEMALE



DIAMETER
inch
1/2" x 1/2" x 1/2"
3/4" x 3/4" x 3/4"
1" x 1" x 1"
1 1/4" x 1 1/4" x 1 1/4"
1 1/2" x 1 1/2" x 1 1/2"
2" x 2" x 2"
2 1/2" x 2 1/2" x 2 1/2"
3" x 3" x 3"
4" x 4" x 4"

## ELBOW FEMALE



DIAMETER
inch
1/2" x 1/2"
3/4" x 3/4"
1" x 1"
1 1/4" x 1 1/4"
1 1/2" x 1 1/2"
2" x 2"
2 1/2" x 2 1/2"
3" x 3"
4" x 4"
1 1/2" x 1 1/4"

## TEE MALE-FEMALE



DIAMETER
inch
1/2" x 1/2" x 1/2"
1/2" x 3/4" x 1/2"
3/4" x 1/2" x 3/4"
3/4" x 3/4" x 3/4"
3/4" x 1" x 3/4"
1" x 1/2" x 1"
1" x 3/4" x 1"
1" x 1" x 1"
1 1/4" x 3/4" x 1 1/4"
1 1/4" x 1" x 1 1/4"
1 1/2" x 1 1/4" x 1 1/2"
1 1/2" x 1 1/2" x 1 1/2"
2" x 1 1/4" x 2"
2" x 1 1/2" x 2"
2" x 2" x 2"
2 1/2" x 2 1/2" x 2 1/2"
3" x 3" x 3"



# THREADED FITTINGS

## NIPPLE



DIAMETER
inch
1/4" x 1/4"
1/2" x 1/2"
3/4" x 3/4"
1" x 1"
1 1/4" x 1 1/4"
1 1/2" x 1 1/2"
2" x 2"
2 1/2" x 2 1/2"
3" x 3"
4" x 4"

## COUPLING



DIAMETER
inch
1/2" x 1/2"
3/4" x 3/4"
1" x 1"
1 1/4" x 1 1/4"
1 1/2" x 1 1/2"
2" x 2"
2 1/2" x 2 1/2"
3" x 3"
4" x 4"

## REDUCING NIPPLE



DIAMETER
inch
3/4" x 1/2"
1" x 1/2"
1" x 3/4"
1 1/4" x 1/2"
1 1/4" x 3/4"
1 1/4" x 1"
1 1/2" x 3/4"
1 1/2" x 1"
1 1/2" x 1 1/4"
2" x 1"
2" x 1 1/4"
2" x 1 1/2"
2 1/2" x 1 1/4"
2 1/2" x 1 1/2"
2 1/2" x 2"
3" x 1 1/2"
3" x 2"
3" x 2 1/2"
4" x 2"
4" x 2 1/2"
4" x 3"

## REDUCING COUPLING



DIAMETER
inch
3/4" x 1/2"
1" x 1/2"
1" x 3/4"
1 1/4" x 3/4"
1 1/4" x 1"
1 1/2" x 1"
1 1/2" x 1 1/4"
2" x 1 1/4"
2" x 1 1/2"
2 1/2" x 1 1/4"
2 1/2" x 1 1/2"
2 1/2" x 2"
3" x 2"
3" x 2 1/2"
4" x 2"
4" x 2 1/2"
4" x 3"

## REDUCING MALE-FEMALE



DIAMETER
inch
1/2" x 1/2"
1/2" x 3/4"
1/2" x 1"
3/4" x 3/4"
3/4" x 1"
1" x 1"
1 1/4" x 1 1/4"
1 1/4" x 1 1/2"
1 1/2" x 1 1/4"
1 1/2" x 1 1/2"
1 1/2" x 2"
1 1/2" x 2 1/2"
2" x 2"
2" x 2 1/2"
2" x 3"
2" x 4"
2 1/2" x 2 1/2"
2 1/2" x 3"
2 1/2" x 4"
3" x 3"
3" x 4"
4" x 4"

## CAP MALE



DIAMETER
inch
1/2"
3/4"
1"
1 1/4"
1 1/2"
2"
2 1/2"
3"
4"

## CAP FEMALE



DIAMETER
inch
1/2"
3/4"
1"

# DRIP LINES WITH FLAT PC DRIPPERS - AS400



AS400		TECHNICAL DETAILS						
NOMINAL DIAMETER	WALL THICKNESS		INSIDE DIAMETER	DRIPPER DISTANCE	COIL LENGTH	MAX. WORKING PRESSURE	MAX. FLUSHING PRESSURE	
	mm	mil						mm
16		35	0,9	14,2	0,20-1,0	400	3,9	3,9
		40	1	14,0	0,20-1,0	400	4,0	4,6
		45	1,2	13,6	0,20-1,0	400	4,0	5,2
20		35	0,9	18,2	0,20-1,0	300	3,9	3,9
		40	1	18,0	0,20-1,0	300	4,0	4,6
		45	1,2	17,6	0,20-1,0	300	4,0	5,2

Filtration requirements: 100 microns / 150 mesh

## Ø16 MAXIMUM LATERAL LENGTH (METERS) AT 2.0 BAR, FLAT

FLOW RATE	SPACING (METERS)								
	0,2	0,3	0,4	0,5	0,6	0,7	0,8	0,9	1,0
1/h									
1,0	123	185	236	271	314	361	382	415	467
1,6	92	128	168	201	230	254	279	310	344
2,0	82	116	147	177	203	229	254	277	299

## Ø20 MAXIMUM LATERAL LENGTH (METERS) AT 2.0 BAR, FLAT

FLOW RATE	SPACING (METERS)								
	0,2	0,3	0,4	0,5	0,6	0,7	0,8	0,9	1,0
1/h									
1,0	247	319	403	475	523	575	607	668	729
1,6	188	248	300	347	391	433	472	509	545
2,0	165	209	263	290	327	364	416	438	461

# DRIP LINES WITH FLAT PC/AS DRIPPERS - AS500



AS500		TECHNICAL DETAILS					
NOMINAL DIAMETER	WALL THICKNESS		INSIDE DIAMETER	DRIPPER DISTANCE	COIL LENGTH	MAX. WORKING PRESSURE	MAX. FLUSHING PRESSURE
mm	mil	mm	mm	m	m	bar	bar
16	35	0,9	14,2	0,20-1,0	400	3,9	3,9
	40	1	14,0	0,20-1,0	400	4,0	4,6
	45	1,2	13,6	0,20-1,0	400	4,0	5,2
20	35	0,9	18,2	0,20-1,0	300	3,9	3,9
	40	1	18,0	0,20-1,0	300	4,0	4,6
	45	1,2	17,6	0,20-1,0	300	4,0	5,2

Filtration requirements: 100 microns / 150 mesh

## Ø16 MAXIMUM LATERAL LENGTH (METERS) AT 2.0 BAR, FLAT

FLOW RATE	SPACING (METERS)								
1/h	0,2	0,3	0,4	0,5	0,6	0,7	0,8	0,9	1,0
1,0	135	204	260	298	345	397	420	457	514
1,6	90	128	162	195	223	252	279	305	329
2,0	101	141	185	221	253	280	307	341	379

## Ø20 MAXIMUM LATERAL LENGTH (METERS) AT 2.0 BAR, FLAT

FLOW RATE	SPACING (METERS)								
1/h	0,2	0,3	0,4	0,5	0,6	0,7	0,8	0,9	1,0
1,0	272	351	443	522	575	632	668	735	802
1,6	204	273	330	382	430	476	519	560	600
2,0	182	230	289	319	360	400	458	482	507

# FLAT DRIP LINES - FD800



FD800 TECHNICAL DETAILS OF DRIP IRRIGATION PIPES								
DIAMETER	THICKNESS	SYSTEM PRESSURE	PIPE DIAMETER		WALL THICKNESS	MAX PRESSURE	MINIMUM FILTRATION	COIL LENGTH
mm	mil	bar	inside	outside	mm	bar	micr/mesh	m
16	5	0,8	16,1	16,35	0,8	0,8	125 / 120	2500
	6	1,0	16,1	16,4	0,15	1,0	125 / 120	2500
	8	1,0	16,1	16,5	0,20	1,2	125 / 120	2000
	10	1,0	16,1	16,6	0,25	1,4	125 / 120	1750
	12	1,0	16,1	16,7	0,30	1,5	125 / 120	1500
	15	1,0	16,1	16,9	0,37	1,8	125 / 120	1000
	18	1,0	16,1	17,0	0,45	2,0	125 / 120	1000
22	8	1,0	22,0	22,4	0,20	1,2	125 / 120	1000
	10	1,0	22,0	22,5	0,25	1,4	125 / 120	1000
	12	1,0	22,0	22,6	0,30	1,5	125 / 120	1000
	15	1,0	22,0	22,7	0,37	1,8	125 / 120	750
	18	1,0	22,0	22,9	0,45	2,0	125 / 120	750

## Ø16 mm FLAT DRIP IRRIGATION PIPES LATERAL LENGTHS (@ 10% flow difference and 1 bar pressure)

SLOPE %	20 cm				30 cm				40 cm				50 cm				60 cm				75 cm				100 cm			
	flow / liter / hour				flow / liter / hour				flow / liter / hour				flow / liter / hour				flow / liter / hour				flow / liter / hour							
	1,2	1,6	2,2	3,2	1,2	1,6	2,2	1,2	1,6	2,2	3,2	1,2	1,6	2,2	1,2	1,6	2,2	3,2	1,2	1,6	2,2	1,2	1,6	2,2	3,2	1,2	1,6	2,2
2	66	61	56	38	79	77	60	47	90	82	71	55	101	84	77	63	125	112	82	69	108	106	93	93	123	115	100	96
1	80	72	63	40	108	104	75	53	130	108	86	65	142	120	96	74	157	144	110	86	159	154	137	137	170	162	145	109
0	98	85	70	45	136	130	105	60	170	155	125	75	194	175	145	85	210	190	165	100	235	215	185	185	276	245	220	136
-1	116	96	78	50	162	146	110	65	212	181	142	80	244	212	162	98	252	241	221	114	311	268	246	246	354	312	310	168
-2	134	105	85	55	191	155	115	70	248	203	156	90	265	246	181	108	271	267	245	126	338	282	266	266	368	321	281	197

## Ø22 mm FLAT DRIP IRRIGATION PIPES LATERAL LENGTHS (@ 10% flow difference and 1 bar pressure)

SLOPE %	20 cm				30 cm				40 cm				50 cm				60 cm				75 cm				100 cm			
	flow / liter / hour				flow / liter / hour				flow / liter / hour				flow / liter / hour				flow / liter / hour				flow / liter / hour							
	1,2	1,6	2,2	3,2	1,2	1,6	2,2	1,2	1,6	2,2	3,2	1,2	1,6	2,2	1,2	1,6	2,2	3,2	1,2	1,6	2,2	1,2	1,6	2,2	3,2	1,2	1,6	2,2
2	87	85	81	46	104	95	93	52	112	103	100	57	114	108	105	59	125	112	110	62	133	116	114	64	144	125	121	69
1	124	111	99	58	142	135	125	72	163	151	141	81	186	166	154	89	198	175	162	94	212	189	174	101	237	204	193	110
0	181	143	123	73	236	185	161	96	268	212	196	113	323	265	225	135	377	302	254	153	403	354	286	176	472	425	334	208
-1	211	175	141	87	281	245	192	120	347	295	238	146	417	353	281	174	493	398	328	200	512	450	380	229	569	530	454	272
-2	252	190	160	96	327	280	220	137	39	350	283	174	229	185	141	89	214	174	155	91	192	161	142	84	172	148	130	77

# ROUND DRIP LINES - AX200



AX200		TECHNICAL DETAILS				
DIAMETER	WALL THICKNESS		INSIDE DIAMETER	COIL LENGHT	MAX. WORKING PRESSURE	MAX. FLUSHING PRESSURE
	mm	mil				
16	35	0,9	14,2	400	3,9	3,9
	40	1,0	14,0	400	4,0	4,6
20	35	0,9	18,2	300	3,9	3,9
	40	1	18,0	300	4,0	4,6
	45	1,2	17,6	300	4,0	5,2

**Filtration requirements:** 130 microns / 120 mesh

Ø16 MAXIMUM LATERAL LENGTH (METERS) AT 2.0 BAR, FLAT									
TERRAIN FLOW RATE	SPACING (METERS)								
1/h	0,2	0,3	0,4	0,5	0,6	0,7	0,8	0,9	1,0
2,0	52	75	90	105	113	120	130	137	145
4,0	35	50	57	63	70	75	82	90	100

Ø20 MAXIMUM LATERAL LENGTH (METERS) AT 2.0 BAR, FLAT									
TERRAIN FLOW RATE	SPACING (METERS)								
1/h	0,2	0,3	0,4	0,5	0,6	0,7	0,8	0,9	1,0
2,0	80	100	135	175	185	210	230	250	275
4,0	53	62	71	102	108	115	122	130	140

# ROUND PIPES - K600



K600		TECHNICAL DETAILS					
NOMINAL DIAMETER	WALL THICKNESS		INSIDE DIAMETER	COIL LENGTH	MAX. WORKING PRESSURE	MAX. FLUSHING PRESSURE	
	mm	mil					mm
16		35	0,9	14,2	400	3,9	3,9
		40	1,0	14,0	400	4,0	4,6
		43	1,1	14,8	400	4,0	5,2
		45	1,2	13,6	400	4,0	5,2
20		40	1,0	18,0	300	3,9	3,9
		43	1,1	17,8	300	4,0	4,6
		45	1,2	17,6	300	4,5	4,6
		57	1,5	17,0	300	4,5	5,2
25		57	1,5	22,0	250	4,5	5,2

# LOCK TYPE FITTINGS



## LOCK TYPE COUPLING

DIAMETER	
mm	
16	16
20	16
20	20
25	25
32	32



## LOCK TYPE MINI VALVE

DIAMETER	
mm	
16	16
16	20
20	20
25	20
25	25
32	32



## LOCK TYPE END CAP

DIAMETER	
mm	
16	
20	
25	
32	



## LOCK TYPE MINI VALVE MALE

DIAMETER	
mm / inch	
16	1/2"
16	3/4"
20	1/2"
20	3/4"
25	1/2"
25	3/4"
25	1"



## LOCK TYPE ADAPTOR MALE

DIAMETER	
mm / inch	
16	1/2"
16	3/4"
20	1/2"
20	3/4"
20	1"
25	1/2"
25	3/4"
25	1"



## LOCK TYPE ELBOW

DIAMETER	
mm	
16	16
20	16
20	20
25	25
32	32



## LOCK TYPE OFFTAKE CONNECTOR

DIAMETER	
mm	
20	16
20	20



## LOCK TYPE TEE

DIAMETER	
mm	
16	16 x 16
16	20 x 16
20	16 x 20
20	20 x 20
25	25 x 25
32	32 x 32



## LOCK TYPE ELBOW MALE

DIAMETER	
mm / inch	
16	1/2"
16	3/4"
20	1/2"
20	3/4"
20	1"
25	1/2"
25	3/4"
25	1"
32	1/2"
32	3/4"
32	1"



# DRIPLINE BARBED FITTINGS



**BARBED  
NIPPLE**

DIAMETER
mm
16 x 16
20 x 16
20 x 20



**BARBED  
ELBOW**

DIAMETER
mm / inch
16 x 16
20 x 20



**BARBED  
NIPPLE MALE**

DIAMETER
mm / inch
16 x 1/2"
16 x 3/4"
20 x 1/2"
20 x 3/4"
25 x 3/4"
25 x 1"
32 x 1"



**BARBED  
ELBOW MALE**

DIAMETER
mm
16 x 1/2"
16 x 3/4"
20 x 1/2"
20 x 3/4"



**BARBED  
GROMMET NIPPLE**

DIAMETER
mm
16 x 16
20 x 16
20 x 20



**BARBED MULTICOUPLING  
NIPPLE (2-V)**

DIAMETER
mm / inch
2 / 16 x 1"
2 / 20 x 1"



**BARBED  
END CAP**

DIAMETER
mm
16
20



**BARBED  
MULTICOUPLING NIPPLE (4-X)**

DIAMETER
mm / inch
4 / 16 x 1"
4 / 20 x 1"



**FOLDING HOSE  
CONNECTOR END PLUG**

DIAMETER
mm
16
20



**BARBED  
TEE**

DIAMETER
mm
16 x 16 x 16
16 x 20 x 16
20 x 16 x 20
20 x 20 x 20



**DRIPLINE  
PIPE STAKE**

DIAMETER
mm
16 x 150
16 x 225
20 x 150
20 x 225
20 x 330



**BARBED  
GROMMET TEE**

DIAMETER
mm
16 x 16
20 x 16
20 x 20



**BARBED GROMMET  
GASKET**

DIAMETER
mm
16
20
25



**BARBED  
TEE MALE**

DIAMETER
mm / inch / mm
16 x 1/2" x 16
16 x 3/4" x 16
20 x 1/2" x 20
20 x 3/4" x 20
20 x 1" x 20



# DRIP TAPE FITTINGS WITH RING



**TAPE WITH RING NIPPLE**

DIAMETER
mm
17 x 17
22 x 22



**TAPE WITH RING TEE MALE**

DIAMETER
mm / inch / mm
17 x 1/2" x 17
17 x 3/4" x 17
22 x 1/2" x 22
22 x 3/4" x 22



**TAPE WITH RING END CAP**

DIAMETER
mm
17
22



**TAPE WITH RING BARBED NIPPLE**

DIAMETER
mm
17 x 16
22 x 20



**TAPE WITH RING GROMMET NIPPLE**

DIAMETER
mm
17 x 16
22 x 20



**TAPE WITH RING MULTICOUPLING NIPPLE (2-V)**

DIAMETER
mm / inch
2 / 17 x 1"
2 / 22 x 1"



**TAPE WITH RING NIPPLE MALE**

DIAMETER
mm / inch
17 x 1/2"
22 x 3/4"



**TAPE WITH RING MULTICOUPLING NIPPLE (4-V)**

DIAMETER
mm / inch
4 / 17 x 1"



**TAPE WITH RING ELBOW**

DIAMETER
mm
17 x 17
22 x 22



**TAPE WITH RING MULTICOUPLING NIPPLE (4-X)**

DIAMETER
mm / inch
4 / 17 x 1"



**TAPE WITH RING ELBOW MALE**

DIAMETER
mm / inch
17 x 1/2"
17 x 3/4"
22 x 1/2"
22 x 3/4"



# DRIP IRRIGATION WITH NUT



**DRIPLINE  
NIPPLE**

DIAMETER
mm
16 x 16
20 x 20



**DRIPLINE  
TEE**

DIAMETER
mm
16 x 16 x 16
20 x 16 x 20
20 x 20 x 20



**DRIPLINE  
END CAP**

DIAMETER
mm
16
20



**DRIPLINE  
TEE MALE**

DIAMETER
mm / inch / mm
16 x 1/2" x 16
16 x 3/4" x 16
20 x 1/2" x 20
20 x 3/4" x 20
20 x 1" x 20



**DRIPLINE  
GROMMET NIPPLE**

DIAMETER
mm
16 x 16
20 x 16
20 x 20



**DRIPLINE MULTICOUPLING  
NIPPLE (2-V)**

DIAMETER
mm
2 / 16 x 1"
2 / 20 x 1"



**DRIPLINE  
NIPPLE MALE**

DIAMETER
mm / inch
16 x 1/2"
16 x 3/4"
20 x 1/2"
20 x 3/4"



**DRIPLINE MULTICOUPLING  
NIPPLE (2-I)**

DIAMETER
mm
2 / 16 x 1"
2 / 20 x 1"



**DRIPLINE  
ELBOW**

DIAMETER
mm
16 x 16
20 x 20



**DRIPLINE MULTICOUPLING  
NIPPLE (4-X)**

DIAMETER
mm / inch
4 / 16 x 1"
4 / 20 x 1"



**DRIPLINE  
ELBOW MALE**

DIAMETER
mm / inch
16 x 1/2"
16 x 3/4"
20 x 1/2"
20 x 3/4"



# MINI VALVES



**BARBED  
MINI VALVE**

DIAMETER
mm
16 x 16
20 x 16
20 x 20



**WITH RING MALE  
MINI VALVE**

DIAMETER
mm / inch
17 x 1/2"
17 x 3/4"
22 x 1/2"
22 x 3/4"



**OFFTAKE BARBED  
MINI VALVE**

DIAMETER
mm
16 x 16
20 x 20



**MINI VALVE  
WITH NUT**

DIAMETER
mm
17 x 17



**BARBED MALE  
MINI VALVE**

DIAMETER
mm / inch
16 x 1/2"
16 x 3/4"
20 x 1/2"
20 x 3/4"



**BARBED MINI VALVE  
WITH NUT**

DIAMETER
mm
16 x 17
20 x 17



**OFFTAKE MINI VALVE  
WITH NUT**

DIAMETER
mm
16 x 17
20 x 17
20 x 22



**WITH NUT MALE  
MINI VALVE**

DIAMETER
mm / inch
17 x 1/2"
17 x 3/4"



**LAY FLAT MINI VALVE  
WITH NUT**

DIAMETER
mm / inch
17



# ONLINE DRIPPERS

## ADJUSTABLE DRIPPERS



DIAMETER
l/h
0 - 70
0 - 100
0 - 150

## ADJUSTABLE ILGAZ DRIPPER



DIAMETER
l/h
0 - 100

## KATIF PC DRIPPER



DIAMETER
l/h
2,30
3,75
8,40

## DRIPPER SET



60 sm
l/h
2
3
4
8

## PC DRIPPERS



DIAMETER
l/h
2
4
8
12
16

## PC DRIPPERS

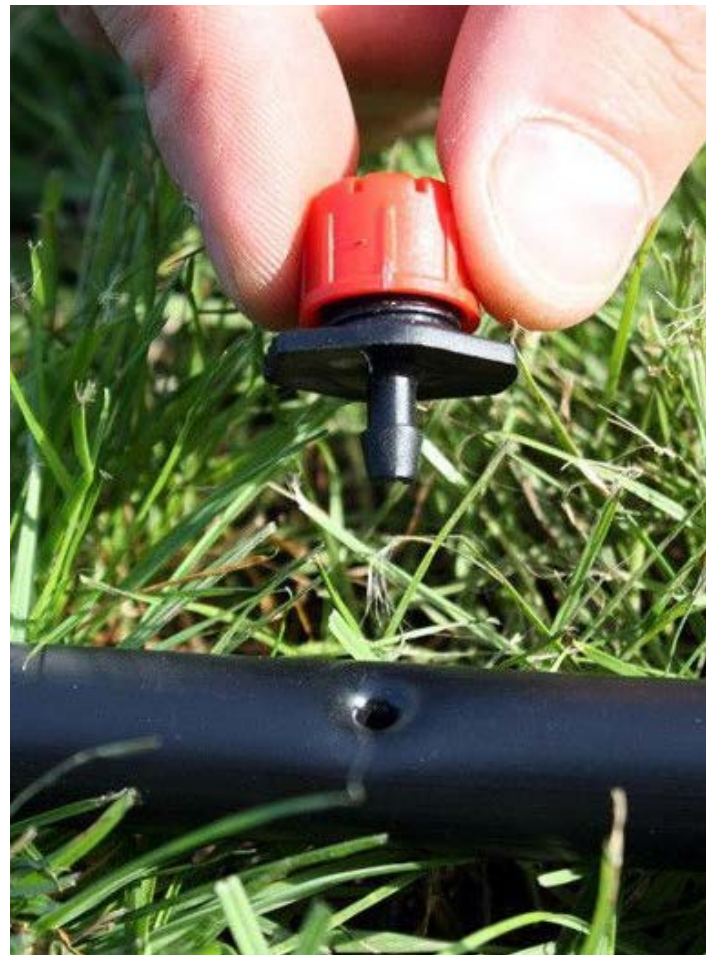


DIAMETER
l/h
2
4
8
12
16
24

## PC DRIPPERS



DIAMETER
l/h
2,20
3,85
7,80
12,00
25,00



# PIPE WITH LATCH & LATCH FITTINGSS

## PIPE WITH LATCH

DIAMETER	LENGTH
mm	m
50	5
50	6
63	6
63	12
75	6
75	12
90	6
110	6
125	6
140	6
160	6



## CROSS ELBOW

DIAMETER
mm
50 x 50
63 x 50
63 x 63
75 x 50
75 x 63
75 x 75
90 x 50
90 x 63
90 x 75
90 x 90
110 x 50
110 x 63
110 x 75
110 x 90
110 x 110
125 x 50
125 x 63
125 x 75
125 x 90
125 x 110
125 x 125
140 x 50
140 x 63
140 x 75
140 x 90
140 x 110
140 x 125
140 x 140
160 x 50
160 x 63
160 x 75
160 x 90
160 x 110
160 x 125
160 x 140
160 x 160

## TEE

DIAMETER
mm
50 x 50
63 x 50
63 x 63
75 x 50
75 x 63
75 x 75
90 x 50
90 x 63
90 x 75
90 x 90
110 x 50
110 x 63
110 x 75
110 x 90
110 x 110
125 x 50
125 x 63
125 x 75
125 x 90
125 x 110
125 x 125
140 x 50
140 x 63
140 x 75
140 x 90
140 x 110
140 x 125
140 x 140
160 x 50
160 x 63
160 x 75
160 x 90
160 x 110
160 x 125
160 x 140
160 x 160



## REDUCER

DIAMETER
mm
75 x 50
75 x 50
90 x 63
90 x 50
110 x 63
110 x 75
125 x 50
125 x 63
125 x 75
140 x 75
140 x 90
140 x 110
140 x 125
160 x 90
160 x 110
160 x 125

## ELBOW

DIAMETER
mm
50
63
75
90
110
125
140
160



# LATCH FITTINGS

## HEAD MALE



DIAMETER	
mm	
50	
63	
75	
90	
110	
125	
140	
160	

## HEAD FEMALE



DIAMETER	
mm	
50	
63	
75	
90	
110	
125	
140	
160	

## PLUG MALE



DIAMETER	
mm	
50	
63	
75	
90	
110	
125	
140	
160	

## PLUG FEMALE



DIAMETER	
mm	
50	
63	
75	
90	
110	
125	
140	
160	

## SPRINK ABOT



DIAMETER	
mm	
50	
63	
75	
90	
110	



## PVC RISER

SIZE	
inch	mm
1"	25
1"	33
1"	50
1"	60
1"	75
1"	100
1"	120
1"	150

## PUMP CONNECTION MALE



DIAMETER	
mm / inch	
50 x 2	
63 x 2	
75 x 2 1/2"	
90 x 3	
110 x 4	
125 x 5	
140 x 5	
160 x 6	



## PUMP CONNECTION FEMALE

DIAMETER	
mm / inch	
50 x 2	
63 x 2	
75 x 2 1/2"	
90 x 3	
110 x 4	
125 x 5	
140 x 5	
160 x 6	



# LATCH FITTINGS

## LINE VALVE



DIAMETER	
mm	
50	
63	
75	
90	
110	
125	
140	
160	

## BALL VALVE



DIAMETER	
inch	
1"	

## SPRING ADAPTER



DIAMETER	
inch	
20 x 1/2"	

## CROSS ABOVE ABOT



DIAMETER		
mm / inch / mm		
20 x 1" x 20		

## COUPLING



DIAMETER	
mm / inch	
3/4" x 3/4"	
3/4" x 1/2"	
1" x 1/2"	
1" x 3/4"	
1" x 1"	

## GASKET



DIAMETER	
mm	
50	
63	
75	
90	
110	
125	
140	
160	

## ADDITIONAL PARTS



DIAMETER	
mm	
50 - 63 - 75	
90 - 110	
125 - 140 - 160	



# SPRINKLERS

## AG1/2MS1

Diameter, inch	1/2"
Nozzle, mm	2,8 x 1,8 3,2 x 1,8 3,2 x 2,3
Pressure, bar	2,5- 3,5
Range, m	21- 23
Flux, m3/h	740- 1397

## AG1/2MS2

Diameter, inch	1/2"
Nozzle, mm	4
Pressure, bar	0,5- 2,5
Range, m	5- 10
Flux, l/min	14,8- 28

## AG3/4FS4

Diameter, inch	1/2", 3/4"
Nozzle, mm	4
Pressure, bar	1,3- 3,0
Range, m	6- 13
Flux, l/min	14,8- 28

## AG3/4FS49

Diameter, inch	3/4"
Nozzle, mm	5,0 x 3,8 5,0 x 4,0 3,8 x 2,3
Pressure, bar	1,5- 3,5
Range, m	12- 14
Flux, m3/h	1,3- 1,7

## AG3/4MS301

Diameter, inch	3/4"
Nozzle, mm	5,0 x 2,8
Pressure, bar	3,0- 5,0
Range, m	13- 18
Flux, l/min	11,6- 41

## AG3/4FS45

Diameter, inch	3/4"
Nozzle, mm	5,0 x 2,5
Pressure, bar	0,5- 4,0
Range, m	3- 16,5
Flux, l/min	6,8- 32,4

## AG1FS50

Diameter, inch	1"
Nozzle, mm	
Pressure, bar	2,0- 5,0
Range, m	15- 17
Flux, m3/h	3,7- 5,0

## AG1FS52

Diameter, inch	1"
Nozzle, mm	
Pressure, bar	2,0- 4,0
Range, m	16- 18
Flux, m3/h	4,8- 5,7

## AG3/4FS23

Diameter, inch	1"
Nozzle, mm	4,5 x 5,0 2,3 x 3,8
Pressure, bar	2,0- 3,5
Range, m	25- 30
Flux, l/min	1160- 3000

## AG1HS25

Diameter, inch	1"
Nozzle, mm	16 x 24
Pressure, bar	2,0- 4,0
Range, m	12- 20
Flux, m3/h	2- 6,5

## AG1HS30 / 360°

Diameter, inch	1,5"
Nozzle, mm	8 x 18
Pressure, bar	2,0- 6,0
Range, m	15- 30
Flux, m3/h	5- 25

## AG2P50

Diameter, inch	2"
Nozzle, mm	16 x 26
Pressure, bar	2,0- 7,0
Range, m	26- 53
Flux, m3/h	17,8- 75

## AG15/25PY

Type	PY30	PY40	PY50
Diameter, inch	1,5"	2"	2,5"
Nozzle, mm	10 x 3,5	14 x 7,5	20 x 3,5
Pressure, bar	3,0- 4,5	3,0- 4,0	4,0- 5,0
Range, m	23- 25	25- 30	30- 40
Flux, m3/h	7- 9	17- 20	30- 35



# HYDRAULIC CONTROL VALVES

## MODELS

<b>M</b>	Manual Hydraulic Control Valve
<b>PR</b>	Pressure Reducing Control Valve
<b>PRPS</b>	Pressure Reducing and Pressure Sustaining Control Valve
<b>PS</b>	Pressure Sustaining Control Valve
<b>PREL</b>	Pressure Reducing and Solenoid Control Valve
<b>EL</b>	Solenoid Control Valve
<b>QR</b>	Quick Relief Control Valve
<b>FL</b>	Float Level Control Valve
<b>FLEL</b>	Electric Float Level Control Valve
<b>DIFL</b>	Differential Float Level Control Valve
<b>PC</b>	Pump Control Valve
<b>DPC</b>	Deep Well Pump Control Valve
<b>SA</b>	Surge Anticipator Valve
<b>HD</b>	Hydraulic Check Valve



## METAL VALVES

Connection		Material			Body		Operating Pressure			
Flanged		GGG40			Globe		PN10, PN16, PN25			
<b>Size</b>										
<b>mm</b>	50	65	80	100	125	150	200	250	300	
<b>inch</b>	2"	2 1/2"	3"	4"	5"	6"	8"	10"	12"	



Connection		Material			Body		Operating Pressure			
Threaded		GGG40			Globe		PN10, PN16, PN25			
<b>ÖLÇÜ</b>										
<b>mm</b>	20	25	32	40	50	65	80			
<b>inch</b>	3/4"	1"	1 1/4"	1 1/2"	2"	2 1/2"	3"			

## PLASTIC VALVES

<b>Connection</b>	<b>Flanged</b>	
<b>Material</b>	Glass Fiber Reinforced Polyamide	
<b>Body</b>	Globe	
	<b>inch</b>	<b>mm</b>
	3"	80
	4"	100
	6"R	150R
<b>Operating Pressure</b>	PN 10	



<b>Connection</b>	<b>Threaded</b>	
<b>Material</b>	Glass Fiber Reinforced Polyamide	
<b>Body</b>	Globe	
	<b>inch</b>	<b>mm</b>
	3/4"	25
	1"	32
	1 1/2"	40
	2"	50
	2 1/2"	65
	3"R	80
<b>Operating Pressure</b>	PN 10	



# VALVES

## BALL VALVE COUPLING



DIAMETER
mm
20 x 20
25 x 25
32 x 32
40 x 40
50 x 50
63 x 63
75 x 75
90 x 90
110 x 110

## BALL VALVE COUPLING FEMALE



DIAMETER
mm / inch
20 x 1/2"
25 x 3/4"
32 x 1"
40 x 1 1/4"
50 x 1 1/2"
63 x 2"
75 x 2 1/2"
90 x 3"
110 x 4"

## BALL VALVE COUPLING MALE



DIAMETER
mm / inch
20 x 1/2"
25 x 3/4"
32 x 1"
40 x 1 1/4"
50 x 1 1/2"
63 x 2"
75 x 2 1/2"
90 x 3"
110 x 4"

## BALL VALVE MALE-FEMALE



DIAMETER
inch
1/2" x 1/2"
3/4" x 3/4"
1" x 1"
1 1/4" x 1 1/4"
1 1/2" x 1 1/2"
2" x 2"
2 1/2" x 2 1/2"
3" x 3"
4" x 4"

## BALL VALVE FEMALE



DIAMETER
inch
1/2" x 1/2"
3/4" x 3/4"
1" x 1"
1 1/4" x 1 1/4"
1 1/2" x 1 1/2"
2" x 2"
2 1/2" x 2 1/2"
3" x 3"
4" x 4"

## PVC BALL VALVE MALE-FEMALE



DIAMETER
inch
1"



## PP BALL VALVE

DIAMETER
inch
1/2"
3/4"
1"
1 1/4"
1 1/2"
2"
2 1/2"
3"
4"

## PP BALL VALVE WITH METAL BAR



DIAMETER
inch
1/2"
3/4"
1"
1 1/4"
1 1/2"
2"
2 1/2"
3"
4"

## METAL BODY BALL VALVE



DIAMETER
inch
1/2"
3/4"
1"
1 1/4"
1 1/2"
2"
2 1/2"
3"
4"

## BUTTERFLY VALVE STEEL & PLASTIC

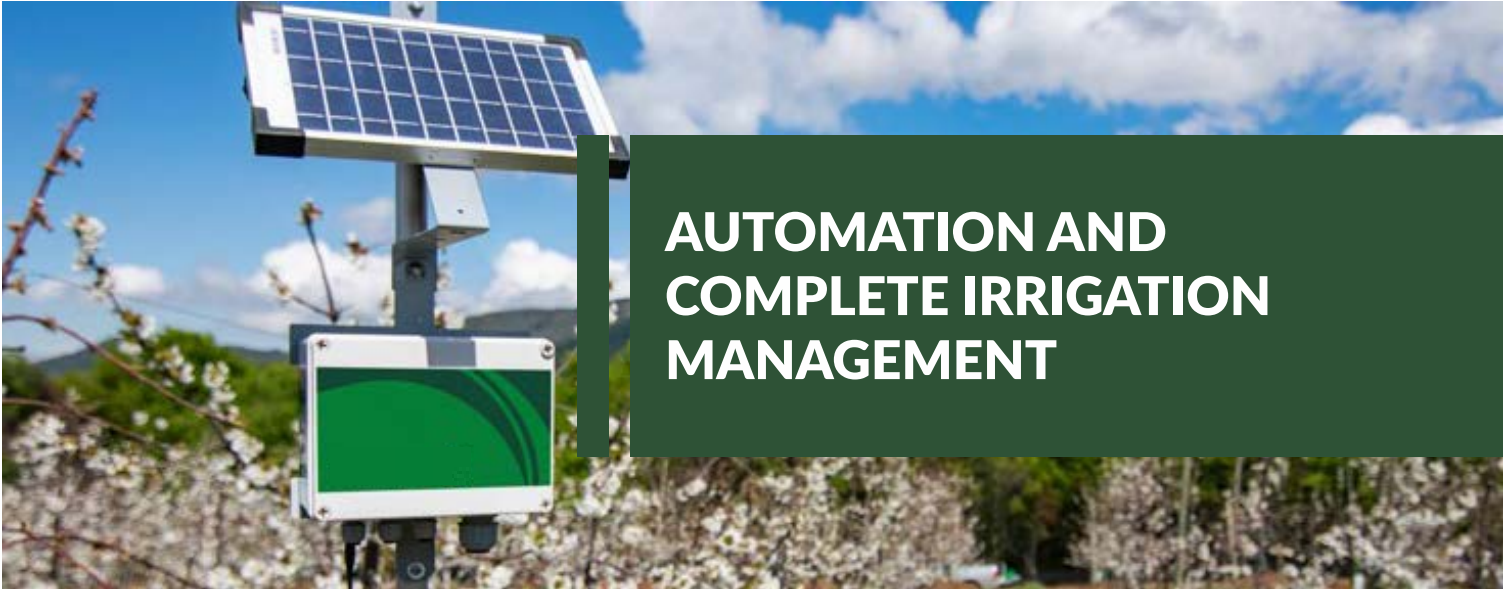


DIAMETER
mm
50
65
80
100
125
160
200

## METAL SEATED GATE VALVE



DIAMETER	PRESSURE
mm	bar
50	PN 10-16
65	PN 10-16
80	PN 10-16
100	PN 10-16
125	PN 10-16
150	PN 10-16
200	PN 10
200	PN 16
250	PN 10
250	PN 16
300	PN 10
300	PN 16
400	PN 10
500	PN 16



## AUTOMATION AND COMPLETE IRRIGATION MANAGEMENT

WiseConn technology allows the user (Administrators, Irrigators, Advisors, etc.) to wirelessly and online monitor, control and automate their irrigation systems. This optimization increases revenue, reduces expenses and improves time management.

### **Flexibility**

Connects with any open-standard sensor. Several options to connect more than 12 different standards.

### **Monitoring and Control**

DropControl's now patented technology enables advanced and secure management of irrigation, fertigation, well operation, pumping, valve control, frost protection, etc.

### **Wireless Mesh Network**

The Mesh network is easy to install, and maintain, and self-repairs to maintain communication. Up to 2 miles of line of sight links between nodes.

### **Online Support**

Subscription plans include expert online technical support for setup and troubleshooting.

### **Cloud-Based**

Data is always available from the cloud to the palm of your hand. All the data is secure, with no servers or software to maintain. Only an internet connection and access key are needed.

### **Maps**

Map visualization allows for easy viewing of the overall status of your process and easy localization of problems.

### **Multiple Users**

The platform allows individualized access for users, with differentiated privileges and a complete history of each one's management.

### **Alarms and Alerts**

Many alarm or alert configurations, via SMS, email, calls, and push notifications on cell phones, can be customized according to parameters measured on the field.

### **Low Energy Consumption**

Each node is energy self-sufficient, with batteries and/or solar power.

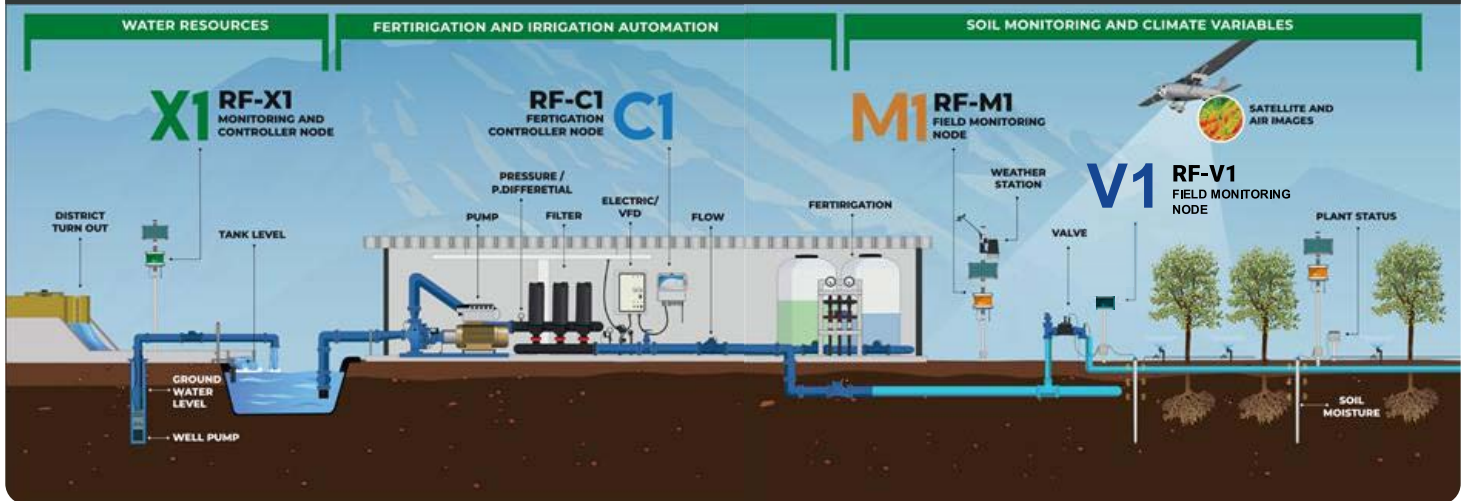
### **API Integration**

Connection with external systems, through direct and real-time access to DropControl data, for a more flexible and personalized user experience.

# AUTOMATION AND COMPLETE IRRIGATION MANAGEMENT

IRRIGATE **PRECISELY**

Best Sustainable Agricultural Water Management Solution



## X1 Modular Station

- Remote Monitoring and Control
- 5 Modular Ports
- Solar Power and Built-in Battery
- Over 10,000 Installed Systems

- Controls 9 valves + 1 pump
- Flexible design to meet requirements



## C1 Central Control Station

- Scalable up to 60 valves in a single device
- Built-in I/O modules
- 220V + Built-in Battery

- Inverter/Drive (VFD) Control
- pH and EC Management for Fertilization
- Bluetooth Connectivity



## M1 Monitoring Station

- Remote Sensor Monitoring
- Solar Power and Built-in Battery

- Multiple Sensor Monitoring:  
Well  
Pool  
Flow  
Pressure, etc.



## V1 Modular Station

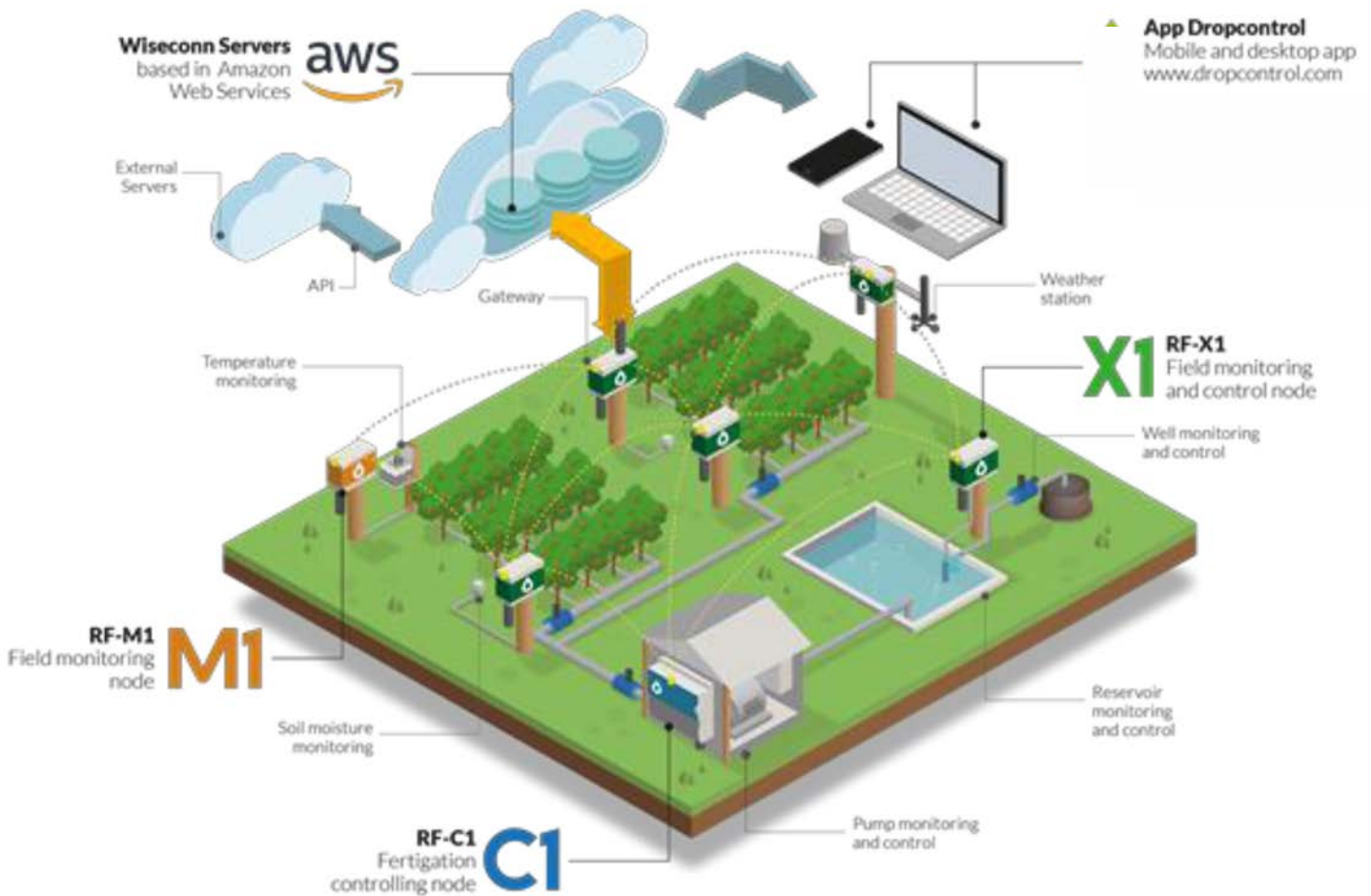
- Controls 2-4 valves
- 2 km wireless range
- Monitors flow, pressure, and soil moisture
- 1-year battery or solar powered

- Remote Valve Control
- Monitoring:  
Flow  
Pressure  
Soil Moisture Sensor  
Weather Station

## WIRELESS IRRIGATION



# AUTOMATION AND COMPLETE IRRIGATION MANAGEMENT



## ONLINE IRRIGATION CONTROL SYSTEM

- Pumps
- Valves (Wired/Wireless)
- Fertilizer Dosing Systems
- Soil Moisture Sensors
- Weather Stations
- Pool/Well Level Sensors
- Water Meters
- Pressure Sensors
- Inverter/Drive Control

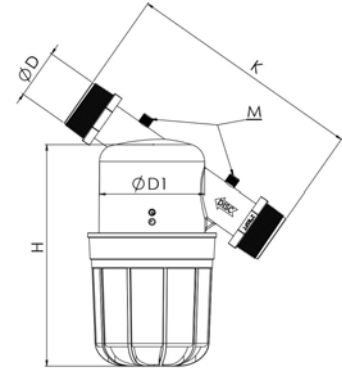


# PLASTIC FILTERS

## PLASTIC MINI FILTERS

<b>Body Material</b>	PP
<b>Cartridge Material</b>	Disc (PP), Screen (SS 304+PP)
<b>Maximum Working Pressure</b>	8 Bar (116 PSI)
<b>Maximum Working Temperature</b>	60 °C / 140 °F
<b>Filtration Degree</b>	130 micron

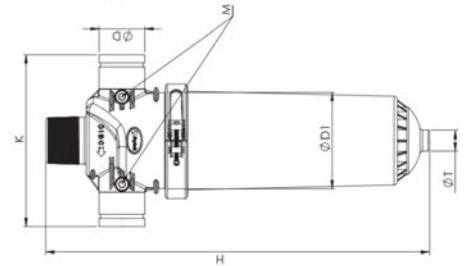
Internal set	D	M	D1	H	K	Flow	Area	Weight
	inch							
Screen	¾	-	68	190	160	5	165	0,3
	1	-	68	190	160	6	165	0,3
	1	-	96	230	220	10	325	0,75
	1 ¼	-	96	230	220	13	325	0,75
	½	-	96	230	220	15	300	0,75
	½	¼	120	280	270	20	515	1,2
Disc	¾	-	68	190	160	5	185	0,45
	1	-	68	190	160	6	185	0,45
	1	-	96	230	220	10	300	1
	1 ¼	-	96	230	220	13	300	1
	½	-	96	230	220	15	325	1
	½	¼	120	280	270	20	550	1,5
2	¼	120	280	270	25	550	1,5	



## PLASTIC SINGLE FILTERS

<b>Body Material</b>	PA
<b>Cartridge Material</b>	Disc (PP)
<b>Maximum Working Pressure</b>	8 Bar (116 PSI)
<b>Maximum Working Temperature</b>	60 °C / 140 °F
<b>Filtration Degree</b>	20-50-100-130 micron

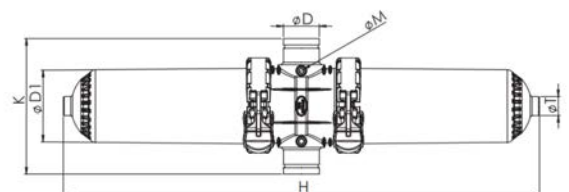
Internal set	D	M	T	D1	H	K	Flow	Area	Weight
	inch								
Disc	2	¼	¾	190	750	335	35	1805	8
	2½	¼	¾	190	750	335	40	1805	8,1
	3	¼	¾	190	750	335	50	1805	8,2



## PLASTIC DOUBLE FILTERS

<b>Body Material</b>	PA
<b>Cartridge Material</b>	Disc (PP), Screen (SS 304+PP)
<b>Maximum Working Pressure</b>	8 Bar (116 PSI)
<b>Maximum Working Temperature</b>	60 °C / 140 °F
<b>Filtration Degree</b>	20-50-100-130 micron

Internal set	D	M	T	D1	H	K	Flow	Area	Weight
	inch								
Disc	3	¼	¾	190	1200	340	60	3610	13,6
	4	¼	¾	190	1200	340	80	3610	13,8



# METAL FILTERS

## METAL DISC FILTER

<b>Body Material</b>	S195T
<b>Cartridge Material</b>	Disc (PP)
<b>Painting Material</b>	Epoxy Polyester
<b>Maximum Working Pressure</b>	8 Bar (116 PSI)
<b>Working Temperature</b>	60 °C / 140 °F
<b>Filtration Method</b>	20-50-100-130 micron

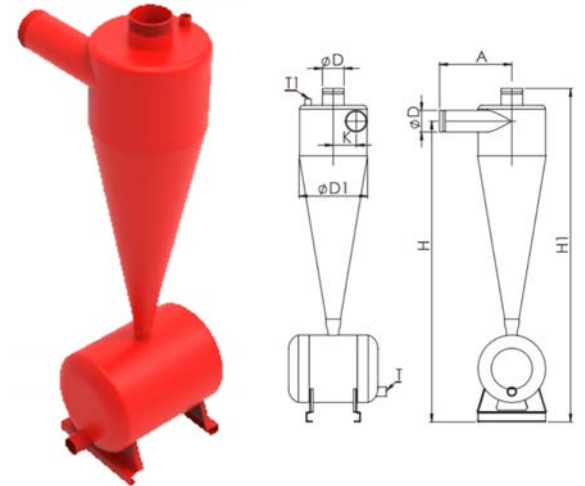
D	D1	M	T	K	H	Flow	Weight
inch				cm		m <sup>3</sup> /h	kg
2	6	¼	½	20	25	10	-
2	8	¼	¾	20	25	20	-
2½	8	¼	¾	30	35	30	-
3	8	¼	¾	35	40	40	-
4	8	¼	¾	45	50	45	-
4	8	¼	¾	65	70	50	-



## METAL HYDROCYCLONE

<b>Body Material</b>	S235JR
<b>Cartridge Material</b>	Disc (PP)
<b>Painting Material</b>	Epoxy Polyester
<b>Maximum Working Pressure</b>	8 Bar (116 PSI)
<b>Working Temperature</b>	60 °C / 140 °F
<b>Filtration Method</b>	20-50-100-130 micron

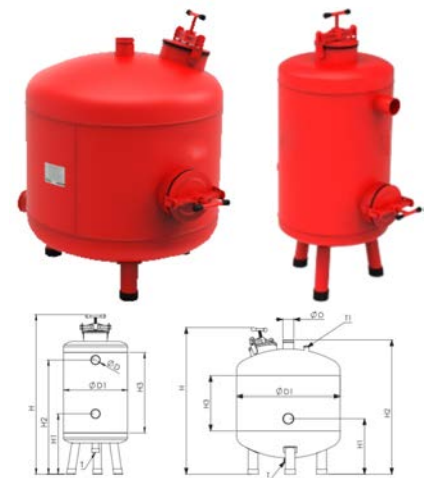
D	D1	T	T1	K	A	H	H1	Flow	Weight
inch				mm				m <sup>3</sup> /h	kg
2	11	¾	½	110	250	1275	1450	20	27
2½	11	1	½	102	300	1335	1530	30	33
3	11	1	½	95	300	1330	1530	40	35
4	11	1	½	82,5	300	1320	1530	60	38
4	13	2	¾	102,5	350	1365	1570	80	42
5	15	2	1	120	400	1520	1745	140	65
6	18	2	1	142,5	450	1750	2035	200	92



## METAL SAND MEDIA (GRAVEL) FILTERS

<b>Body Material</b>	S235JR
<b>Cartridge Material</b>	Disc (PP)
<b>Painting Material</b>	Epoxy Polyester
<b>Maximum Working Pressure</b>	8 Bar (116 PSI)
<b>Working Temperature</b>	60 °C / 140 °F
<b>Filtration Method</b>	Diffuser

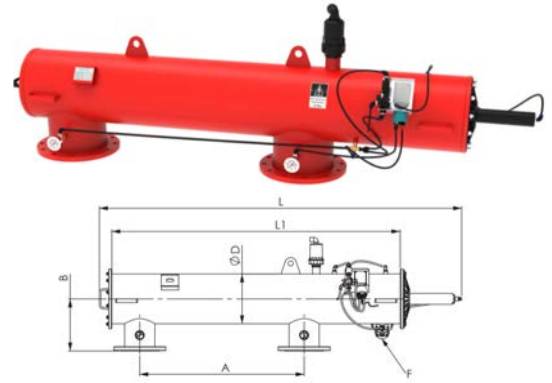
D	D1	T	T1	H	H1	H2	H3	Flow	Weight	Sand
inch				mm				m <sup>3</sup> /h	kg	kg
2½	24	2	-	1450	560	1060	750	20	77	300
3	24	2	-	1450	560	1260	750	24	82	300
4	24	2	-	1700	560	1100	1000	123	94	350
3	36	2	1	1195	420	1100	500	50	132	350
4	36	2	1	1195	420	1100	500	55	140	350



# AUTOMATIC FILTERS

## HORIZONTAL AUTOMATIC FILTER

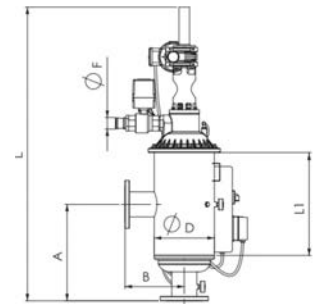
<b>Body Material</b>	S195T / SS 316L / SS 304 L
<b>Screen Material</b>	SS 304L, PA6GFR30
<b>Maximum Working Pressure</b>	10 Bar (145 PSI)
<b>Minimum Working Pressure</b>	2,5 Bar (36 PSI)
<b>Maximum Working Temperature</b>	60 °C (140 °F)
<b>Back Flush Operation Criteria</b>	Time and / or Pressure Differential
<b>Back Flush Controlling Unit</b>	Electronic (AC/DC ) Control
<b>Filtration Degree</b>	20-2000 micron (μ)
<b>Painting Method</b>	Electrostratic Powder Coating
<b>Painting Material</b>	Epoxy Polyester



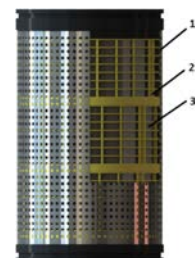
Inlet Outlet		A	B	L1	L	D	F	Flow	Drainage	Area	Nozzle	Screen	Weight
inch	dn	mm			inch		m <sup>3</sup> /h		cm <sup>2</sup>	piece		kg	
4	100	500	287	1070	1475	10	2	120	12	2634	2	4	64
4	100	600	287	1270	1675	10	2	140	18	3951	3	6	75
5	125	600	287	1270	1675	10	2	150	18	3951	3	6	78
5	125	900	287	1580	1985	10	2	160	24	5268	4	8	89
6	150	900	287	1580	1985	10	2	180	24	5268	4	8	94
6	150	1100	312	1972	2375	12	2	220	24	7902	6	12	132
8	200	1100	312	1972	2375	12	2	320	36	7902	6	12	135
10	250	1100	312	1972	2375	12	2	380	36	7902	6	12	166

## VERTICAL AUTOMATIC FILTER

<b>Body Material</b>	S195T / SS 316L / SS 304 L
<b>Screen Material</b>	SS 304L, PA6GFR30
<b>Maximum Working Pressure</b>	10 Bar (145 PSI)
<b>Minimum Working Pressure</b>	1 Bar (14.5 PSI)
<b>Maximum Working Temperature</b>	60 °C (140 °F)
<b>Back Flush Operation Criteria</b>	Time and / or Pressure Differential
<b>Back Flush Controlling Unit</b>	Electronic (AC/DC ) Control
<b>Filtration Degree</b>	20-2000 micron (μ)
<b>Painting Method</b>	Electrostratic Powder Coating
<b>Painting Material</b>	Epoxy Polyester



Inlet Outlet		A	B	L1	L	D	F	Flow	Drainage	Area	Nozzle	Screen	Weight
inch	dn	mm			inch		m <sup>3</sup> /h		cm <sup>2</sup>	piece		kg	
2	50	390	270	365	1120	10	2	40	12	1317	2	2	42
2½	65	390	270	365	1120	10	2	50	12	1317	2	2	43
3	80	390	270	365	1120	10	2	55	12	1317	2	2	44
3	80	440	270	465	1220	10	2	70	18	1975	3	3	47
4	100	440	270	465	1220	10	2	100	18	1975	3	3	49
4	100	490	270	565	1320	10	2	120	12	2634	4	4	51
5	125	590	287	765	1520	10	2	150	18	3951	6	6	56
6	150	590	287	765	1520	10	2	160	18	3951	6	6	58





# FILTER SYSTEMS

## PLASTIC DISC FILTER SYSTEMS • MANUAL / AUTOMATIC

<b>Plastic Filter Types</b>	Manual Disc (PSD), Self Clean Disc (PSC)
<b>Disc Material</b>	PP
<b>Manifold Material</b>	Steel / Stainless Steel / Plastic
<b>Maximum Working Pressure</b>	8 Bar (116 PSI)
<b>Minimum Working Pressure</b>	2 Bar (29 PSI)
<b>Maximum Working Temperature</b>	60 °C (140 °F)
<b>Back Flush Operation</b>	Pressure Differential
<b>Back Flush Controlling</b>	Manual / Electronic
<b>Filtration Degree</b>	20-50-100-130 micron

Filter count piece	Filter size inch	Manifold size dn	Flow m <sup>3</sup> /h
2	4	100	80-85
3	4	125	120-130
4	4	150	160-170
5	4	150	200-210
6	4	200	240-250
7	4	200	280-300



## PLASTIC DISC FILTER SYSTEMS • MANUAL / AUTOMATIC

<b>Body Material</b>	PA6GFR30
<b>Disc Material</b>	PP
<b>Manifold Material</b>	Steel, Epoxy Polyester Paint
<b>Maximum Working Pressure</b>	8 Bar (116 PSI)
<b>Minimum Working Pressure</b>	2 Bar (29 PSI)
<b>Maximum Working Temperature</b>	60 °C (140 °F)
<b>Back Flush Operation</b>	Time and Pressure
<b>Back Flush Controlling</b>	Electronic (AC/DC)
<b>Filtration Degree</b>	20-50-100-130 micron

Filter count piece	Filter size inch	Manifold size dn	Flow m <sup>3</sup> /h
2	3	100	80-85
3	3	100	80-85
4	3	125	120-130
5	3	150	160-170
6	3	150	200-210
7	3	200	240-250
8	3	200	280-300



# GRAVEL SYSTEMS

## SAND MEDIA FILTER SYSTEMS WITH PLASTIC DISC FILTERS

<b>Filter Material</b>	PA6GFR30
<b>Disc Material</b>	PP
<b>Manifold Material</b>	Steel, Epoxy Polyester Paint
<b>Maximum Working Pressure</b>	8 Bar (116 PSI)
<b>Minimum Working Pressure</b>	1 Bar (15 PSI) / 2 Bar (29 PSI)
<b>Maximum Working Temperature</b>	60 °C (140 °F)
<b>Back Flush Operation</b>	Pressure Differential
<b>Back Flush Controlling</b>	Manual
<b>Filtration Degree</b>	20-50-100-130 micron

<b>Filter Material</b>	PA6GFR30
<b>Disc Material</b>	PP
<b>Manifold Material</b>	Steel, Epoxy Polyester Paint
<b>Maximum Working Pressure</b>	8 Bar (116 PSI)
<b>Minimum Working Pressure</b>	1 Bar (15 PSI) / 2 Bar (29 PSI)
<b>Maximum Working Temperature</b>	60 °C (140 °F)
<b>Back Flush Operation</b>	Time and Pressure
<b>Back Flush Controlling</b>	Electronic (AC/DC)
<b>Filtration Degree</b>	20-2000 micron



Tank count piece	Tank size inch	Manifold size inch	Flow m <sup>3</sup> /h
2	24-3	4	40
3	24-3	4	60
4	24-3	5	80
2	36-3	5	84
3	36-3	6	126
4	36-3	8	168
2	36-4	5	120
3	36-4	6	180
4	36-4	8	240



# FERTILIZATION

## FERTILIZER TANK

<b>Body Material</b>	ST-37
<b>Maximum Working Pressure</b>	8 bar (116 PSI)
<b>Maximum Working Temperature</b>	60 °C (140 F)
<b>Painting Material</b>	Epoxy Polyester

Tank type	D	G	C	T	H	H1	Capacity	Weight
	inch				mm		lt	kg
Vertical	15	½	½	½	330	790	60	20
	18	¾	¾	¾	500	960	100	30
	24	1	1	1	600	1060	200	56
Horizontal	18	¾	¾	¾	500	740	100	33
	24	1	1	1	600	860	200	59
	24	1	1	1	750	860	300	66
	24	1	1	1	1000	860	350	82
	24	1	1	1	1500	860	500	108



## MIXER CHROME FERTILIZER TANK

Features	Weight
2 mm stainless steel body	1000 lt 2000 lt
Stainless steel mixer blade shaft	
Speed reduction gear and motor (37d.d./ 0.55kw)	
Pump 2m³/h at 6 bar	
Two-way electrical socket	



## MIXER PLASTIC FERTILIZER TANK

Features	Weight
Body made of polyethylene plastic material	1000 lt
Stainless steel mixer blade shaft	
Speed reduction gear and motor (37d.d./ 0.55kw)	
Pump 2m³/h at 6 bar	
Two-switch electrical socket	
Three-legged iron frame	



## AUTOMATIC FERTILIZATION SYSTEM

Features
Original interface software developed by Targe engineers
Ability to define sequential or scheduled irrigation
Programmable irrigation identification by date
Remote monitoring and management with Targe web and mobile software
Stainless chrome chassis
EC-pH control with proportional valves or on/off valves optionally
Targe venturi system (1+1, 2+1, 3+1, 4+1, 5+1... optionally selectable)
EC-pH Fertilization according to sensor values or with Targe original design Liters/Ratio
Ability to determine the screen size that suits your needs
Full control of your irrigation system with a real Linux-based computer and Targe software
Remote monitoring and management with Targe web and mobile software
Actual monitoring and reporting with event logs and reports
16 valves and irrigation system control (can be increased with additional cards with CAN protocol)
24/7 alarm management via SMS



### VENTURI SET

DIAMETER
inch
1"
2"



### FERTILIZATION VALVE

DIAMETER	
DN / inch	
50	2"
65	2 ½"
80	3"
100	4"
125	5"

# PUMPS



## PETROL PUMPS

Size	Horsepower	Speed	Suction Height	Flow Rate	Fuel Consumption	Weight
inch	HP	RPM	m	lt/min	lt/h	kg
2	1-3	2000-4000	5-15	100-300	0.3-1	8-20
3	5-10	2000-4000	10-20	300-600	0.5-1.5	15-30
4	8-15	2000-4000	15-25	600-1200	1-2	25-50

## DIESEL PUMPS

Size	Horsepower	Speed	Suction Height	Flow Rate	Fuel Consumption	Weight
inch	HP	RPM	m	lt/min	lt/h	kg
3	5-10	2000-3600	10-20	300-700	0.7-1.5	20-40
4	8-15	2000-3600	15-25	600-1200	1-2	30-50
6	12-20	1800-3000	20-30	1000-2000	2-4	50-80

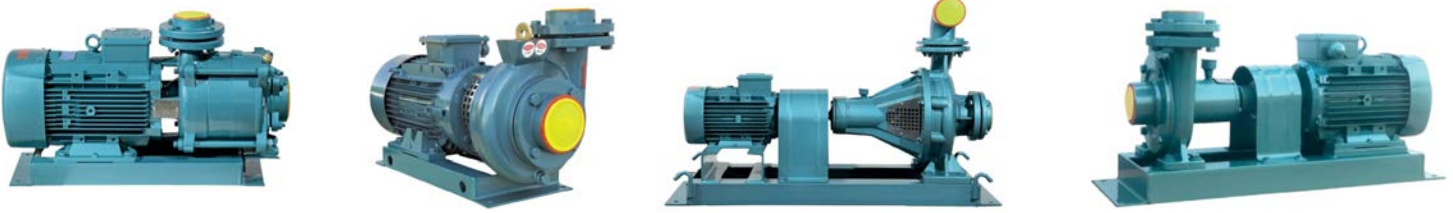
## DIESEL PUMPS / HIGH PRESSURE

Size	Horsepower	Speed	Suction Height	Flow Rate	Fuel Consumption	Weight
inch	HP	RPM	m	lt/min	lt/h	kg
3	10-15	2000-3600	30-50	200-400	1-3	25-45
4	15-25	1800-3600	40-60	400-800	2-4	40-60
6	25-40	1800-3000	50-80	800-1500	3-6	60-90

**Note:** These figures are available according to the data, depending on the model. Specifications are important according to the application.



# PUMPS



## ELECTRIC PUMPS

Voltage (V)	Power (kW)	Head (m)	Flow Rate (lt/min)	Energy Consumption (kWh)	Operating Pressure (bar)	Motor Type
220	0.55	5 - 25	3 - 12	0.3 - 0.5	0.2 - 1	Monoblock
	0.75	6 - 28	6 - 18	0.4 - 0.6	0.3 - 1.5	Monoblock
	1.1	8 - 30	12 - 30	0.5 - 0.7	0.3 - 2	Monoblock
	1.5	10 - 32	18 - 48	0.7 - 1.0	0.5 - 2.5	Monoblock
	2	12 - 35	24 - 60	0.9 - 1.2	0.5 - 3	Monoblock
380	3	10 - 30	50 - 220	2 - 4	0.5 - 3	Monoblock / Gearbox
	4	10 - 30	60 - 240	2 - 4	0.5 - 3	Monoblock / Gearbox
	5.5	12 - 35	120 - 360	3 - 5	0.5 - 4	Monoblock / Gearbox
	7.5	15 - 45	180 - 480	4 - 6	0.5 - 5	Monoblock / Gearbox
	11.5	20 - 50	300 - 600	5 - 8	0.5 - 6	Monoblock / Gearbox
	15	25 - 55	360 - 720	6 - 9	0.5 - 7	Monoblock / Gearbox
	18.5	30 - 60	480 - 900	7 - 10	0.5 - 8	Monoblock / Gearbox
	22.5	35 - 70	600 - 1200	8 - 12	0.5 - 9	Monoblock / Gearbox
	30	40 - 80	720 - 1500	10 - 15	0.5 - 10	Gearbox
	37.5	45 - 90	900 - 1800	12 - 18	0.5 - 11	Gearbox
	45	50 - 120	1200 - 2100	14 - 20	0.5 - 12	Gearbox
	55	55 - 150	1500 - 2400	16 - 22	0.5 - 13	Gearbox

**Note:** These figures are available according to the data, depending on the model. Specifications are important according to the application.

## SUBMERSIBLE PUMPS

Features
Suitable for high-pressure applications up to 80 m <sup>3</sup> /h flow rates
Applications: Agriculture, municipal and domestic applications
SK, RN and SN pumps can be safely used in projects for potable water
Models: 4", 5" and 6"
Operating range at 50 Hz: Q = 0,6 m <sup>3</sup> /h – 80 m <sup>3</sup> /h
Standard Outlet: From 1 ¼" to 3" female Threaded BSP / BSPP (NPT as an option)
Rotation: Counter clockwise
Connection: NEMA mounting design
Minimum water level from 600 to 800 mm from the bottom of the suction grid
Maximum water temperature: 40 °C
Maximum allowable solid quantity: 25 g/m <sup>3</sup>
Maximum size of solids handled: 2mm

4" / HP	5" / HP
0,5-1,5	5,5-20
0,5-3,0	
0,5-4,0	
0,5-5,5	
1,0-7,5	4" / HP
1,0-5,5	5,5-15
1,0-10	5,5-20
1,5-10	5,5-40
1,5-10	5,5-30
2,0-10	5,5-50
	5,5-50



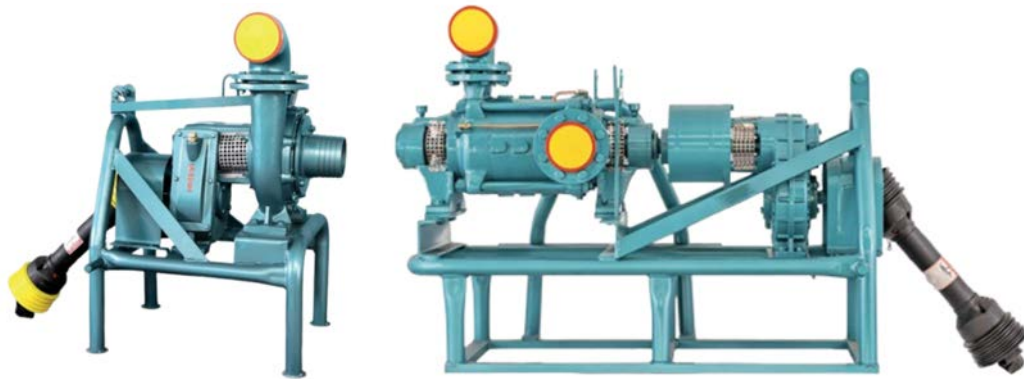
## DRILLING PIPES

TECHNICAL SPECIFICATIONS OF DRILL PIPES							
DN	100 m depth		300 m depth		500 m depth		Length
	inch	s/mm	inch	s/mm	inch	s/mm	
113	4"	4,75	4"	5,70	-	-	407
125	4 ½"	5,00	4 ½"	6,20	-	-	407
140	5"	5,90	5"	7,00	5"	10,4	407
160	5 ½"	6,80	5 ½"	8,30	5 ½"	11,9	407
175	6"	7,00	6"	8,80	6"	13	407
185	7"	7,20	7"	9,20	-	-	407
200	7 ½"	8,00	7 ½"	10,3	7 ½"	13,5	407
225	8"	8,90	8"	11,4	8"	16	407
250	9"	10,0	9"	12,6	-	-	407
280	10"	11,3	10"	14,4	-	-	407



**Note:** You can contact us for drilling water wells for pumps.

# PUMPS



## TRACTOR TYPE PUMPS

Inlet inch	Power HP	400 rpm				Power HP	450 rpm				Power HP	500 rpm			
		Hm m	Q m <sup>3</sup> /h	Hm m	Q m <sup>3</sup> /h		Hm m	Q m <sup>3</sup> /h	Hm m	Q m <sup>3</sup> /h		Hm m	Q m <sup>3</sup> /h	Hm m	Q m <sup>3</sup> /h
4" - 3"	20	20	91	40	50	29	20	105	55	41	40	40	104	60	74
	25	25	137	35	130	36	25	158	50	115	48	40	169	65	100
4" - 4"	31	25	149	35	132	45	20	169	65	77	61	40	143	65	133
5" - 4"	26	20	165	30	144	37	10	182	45	127	50	30	200	55	140
	28	30	120	45	87	40	30	146	60	86	55	45	152	70	108
5" - 5"	43	40	155	50	146	61	50	175	70	127	83	60	194	80	179
5" - 4"	33	30	160	40	141	47	30	190	55	117	64	45	200	65	140
5" - 5"	35	20	238	30	184	48	15	290	50	100	65	30	298	50	208
6" - 6"	33	15	330	25	220	47	20	364	35	210	65	25	390	40	270
6" - 5"	37	15	377	25	315	53	25	409	40	223					
6" - 5"	23	10	365	20	201	33	12	413	28	108					
8" - 6"	38	12	550	20	365	53	16	602	30	329					

## TRACTOR TYPE PUMPS - MULTISTAGE

Inlet inch	Power HP	400 rpm				Power HP	450 rpm				Power HP	500 rpm				
		Hm m	Q m <sup>3</sup> /h	Hm m	Q m <sup>3</sup> /h		Hm m	Q m <sup>3</sup> /h	Hm m	Q m <sup>3</sup> /h		Hm m	Q m <sup>3</sup> /h	Hm m	Q m <sup>3</sup> /h	
5" - 4"	30	25	121	55	53	43	30	137	65	85	57	35	152	80	95	
3"	3"	22	70	40	120	17	32	90	45	150	22	43	110	50	180	31
		27	90	40	130	30	38	110	45	180	22	52	130	50	190	41
		31	100	40	150	30	44	130	45	220	9	60	160	50	230	39
		36	120	40	170	31	51	150	45	250	12	69	180	50	260	40
4"	3"	35	60	71	100	52	50	80	79	130	56	67	90	90	170	57
		43	80	70	130	49	62	30	137	65	51	84	120	89	210	57
4" - 3"	3"	36	30	110	90	33	51	35	125	110	50					
		52	65	103	130	52	74	80	118	160	63					
5" - 4"	40	30	156	70	91	57	35	178	90	100						



# U-PVC PIPES



## U-PVC PIPES

### TECHNICAL SPECIFICATIONS OF U-PVC PIPES

DN	GASKET SOCKETED						SOLVENT CEMENT SOCKETED					
	PN 6		PN 10		PN 16		PN 6		PN 10		PN 16	
	s/mm	kg/m	s/mm	kg/m	s/mm	kg/m	s/mm	kg/m	s/mm	kg/m	s/mm	kg/m
20	-	-	-	-	-	-	-	-	-	-	1,5	0,13
25	-	-	-	-	-	-	-	-	1,5	0,16	1,9	0,21
32	-	-	-	-	-	-	-	-	1,6	0,24	2,4	0,34
40	-	-	-	-	-	-	-	-	1,9	0,35	3,0	0,53
50	1,6	0,36	2,4	0,56	3,7	0,82	1,6	0,36	2,4	0,56	3,7	0,82
63	2,0	0,57	3,0	0,87	4,7	1,31	2,0	0,57	3,0	0,87	4,7	1,31
75	2,3	0,79	3,6	1,25	5,6	1,88	2,3	0,79	3,6	1,24	5,6	1,86
90	2,8	1,15	4,3	1,80	6,7	2,69	2,8	1,15	4,3	1,78	6,7	2,66
110	2,7	1,43	4,2	2,19	6,6	3,31	2,7	1,37	4,2	2,16	6,6	3,26
125	3,1	1,86	4,8	2,82	7,4	4,23	3,1	1,78	4,8	2,78	7,4	4,16
140	3,5	2,36	5,4	3,57	8,3	5,33	3,5	2,21	5,4	3,51	8,3	5,23
160	4,0	3,08	6,2	4,69	9,5	6,96	4,0	2,88	6,2	4,60	9,5	6,83
200	4,9	4,72	7,7	7,27	11,9	10,9	4,9	4,46	7,7	7,12	11,9	10,61
225	5,5	5,97	8,6	9,15	13,4	13,8	5,5	5,67	8,6	8,95	13,4	13,4
250	6,2	7,48	9,6	11,3	14,8	17	6,2	6,98	9,6	11,1	14,8	16,5
280	6,9	9,31	10,7	14,3	16,6	21,4	6,9	8,76	10,7	14,0	16,6	20,4
315	7,7	11,7	12,1	18,1	18,7	27,2	7,7	11,08	12,1	17,4	18,7	26,8
355	8,7	14,9	13,6	22,9	21,1	34,6	8,7	14,18	13,6	22,1	21,1	33,6
400	9,8	19,0	15,3	29,3	23,7	44,6	9,8	17,94	15,3	28,0	23,7	42,8
450	11,0	24,15	17,2	32,0	-	-	11,0	23,11	17,2	35,6	-	-
500	12,3	30,0	19,1	-	-	-	12,3	28,72	19,1	43,9	-	-



# U-PVC FITTINGS

## U-PVC REDUCER

DIAMETER	PRESSURE
mm	bar
20 x 16	PN 16
25 x 20	PN 16
32 x 20	PN 16
32 x 25	PN 16
40 x 20	PN 16
40 x 25	PN 16
40 x 32	PN 16
50 x 30	PN 16
50 x 40	PN 16
63 x 32	PN 16
63 x 40	PN 16
63 x 50	PN 16
75 x 40	PN 16
75 x 50	PN 16
75 x 63	PN 16
90 x 32	PN 16
90 x 50	PN 16
90 x 63	PN 16
90 x 75	PN 16
110 x 50	PN 16
110 x 63	PN 16
110 x 75	PN 16
110 x 90	PN 16
125 x 63	PN 16
125 x 75	PN 16
125 x 90	PN 16
125 x 110	PN 16
140 x 63	PN 16
140 x 75	PN 16
140 x 90	PN 16
140 x 110	PN 16
140 x 125	PN 16
160 x 90	PN 16
160 x 110	PN 16
160 x 140	PN 16
200 x 160	PN 16
225 x 200	PN 16
250 x 200	PN 16
250 x 225	PN 16
280 x 250	PN 16
315 x 280	PN 16
355 x 280	PN 16
355 x 315	PN 16
400 x 280	PN 16
400 x 315	PN 16
400 x 355	PN 16



## U-PVC ELBOW 45°

DIAMETER	PRESSURE
mm	bar
20	PN 16
25	PN 16
32	PN 16
40	PN 16
50	PN 16
63	PN 16
75	PN 16
90	PN 16
110	PN 16
125	PN 16
140	PN 16
160	PN 16
200	PN 16
225	PN 10
250	PN 10
280	PN 10
315	PN 10
355	PN 10
400	PN 10



## U-PVC ELBOW 90°

DIAMETER	PRESSURE
mm	bar
20	PN 16
25	PN 16
32	PN 16
40	PN 16
50	PN 16
63	PN 16
75	PN 16
90	PN 16
110	PN 16
125	PN 16
140	PN 16
160	PN 16
200	PN 16
225	PN 10
250	PN 10
280	PN 10
315	PN 10
355	PN 10
400	PN 10



## U-PVC REDUCER FEMALE

DIAMETER	PRESSURE
inch	bar
1/2"	PN 16
1/2"	PN 16
3/4"	PN 16
1"	PN 16
1"	PN 16
1 1/4"	PN 16
1"	PN 16
1 1/2"	PN 16
1 1/2"	PN 16
2"	PN 16
2"	PN 16
2 1/2"	PN 10
2"	PN 10
2 1/2"	PN 10
3"	PN 10



## U-PVC DOUBLE SOCKET

DIAMETER	PRESSURE
mm	bar
16	PN 16
20	PN 16
25	PN 16
32	PN 16
40	PN 16
50	PN 16
63	PN 16
75	PN 16
90	PN 16
110	PN 16
125	PN 16
140	PN 16
160	PN 16
200	PN 16
225	PN 10
250	PN 10
280	PN 10
315	PN 10
355	PN 10
400	PN 10



# U-PVC FITTINGS

## U-PVC ONE SIDE REDUCER ADAPTOR FEMALE



DIAMETER		PRESSURE	
inch		bar	
1/2"		PN 16	
3/4"		PN 16	
1"		PN 16	
1 1/4"		PN 16	
1 1/2"		PN 16	
2"		PN 16	
2 1/2"		PN 16	
3"		PN 16	
4"		PN 16	
4 1/2"		PN 16	
5"		PN 16	
6"		PN 10	
7"		PN 10	
8"		PN 10	
9"		PN 10	

## U-PVC FLANGE ADAPTOR



DIAMETER		PRESSURE	
mm		bar	
16		PN 16	
20		PN 16	
25		PN 16	
32		PN 16	
40		PN 16	
50		PN 16	
63		PN 16	
75		PN 16	
90		PN 16	
110		PN 16	
125		PN 16	
140		PN 16	
160		PN 16	
200		PN 16	
225		PN 16	
250		PN 10	
280		PN 10	
315		PN 10	
355		PN 10	
400		PN 10	
450		PN 4	
500		PN 4	

## U-PVC ONE SIDE REDUCER ADAPTOR MALE



DIAMETER		PRESSURE	
inch		bar	
1/2"		PN 16	
3/4"		PN 16	
1"		PN 16	
1 1/4"		PN 16	
1 1/2"		PN 16	
2"		PN 16	
2 1/2"		PN 16	
3"		PN 16	
4"		PN 16	

## U-PVC TEE



DIAMETER		PRESSURE	
mm		bar	
20		PN 16	
25		PN 16	
32		PN 16	
40		PN 16	
50		PN 16	
63		PN 16	
75		PN 16	
90		PN 16	
110		PN 16	
125		PN 16	
140		PN 16	
160		PN 16	
200		PN 16	
225		PN 10	
250		PN 10	
280		PN 10	
315		PN 10	
355		PN 10	
400		PN 10	

## U-PVC ADAPTOR MALE (LONG TYPE)



DIAMETER		PRESSURE	
inch		bar	
1/2"		PN 16	
2"		PN 16	
2 1/2"		PN 16	
3"		PN 16	
4"		PN 16	
4 1/2"		PN 16	
5"		PN 16	
6"		PN 16	
7"		PN 10	

## U-PVC SPRING CHECKVALVE



DIAMETER		PRESSURE	
mm		bar	
16		PN 16	
20		PN 16	
25		PN 16	
32		PN 16	
40		PN 16	
50		PN 16	
63		PN 16	
75		PN 16	
90		PN 16	
110		PN 16	

## U-PVC TRIANGLE GASKET



DIAMETER
mm
50-500

# U-PVC FITTINGS

## U-PVC END CAP



DIAMETER	PRESSURE
mm	bar
20	PN 16
25	PN 16
32	PN 16
40	PN 16
50	PN 16
63	PN 16
75	PN 16
90	PN 16
110	PN 16
125	PN 16
140	PN 16
160	PN 16
200	PN 16
225	PN 16
250	PN 10
280	PN 10
315	PN 10
355	PN 10
400	PN 10
450	PN 10
500	PN 10

## U-PVC CROSS



DIAMETER	PRESSURE
mm	bar
20	PN 16
25	PN 16
32	PN 16
40	PN 16
50	PN 16
63	PN 16
75	PN 16
90	PN 16
110	PN 16
125	PN 16
140	PN 16
160	PN 16
200	PN 16
225	PN 10
250	PN 10
280	PN 10
315	PN 10
355	PN 10
400	PN 10

## U-PVC FLANGE SOCKET



DIAMETER	PRESSURE
mm	bar
20	PN 16
25	PN 16
32	PN 16
40	PN 16
50	PN 16
63	PN 16
75	PN 16
90	PN 16
110	PN 16
125	PN 16
140	PN 16
160	PN 16
200	PN 16

## U-PVC FLANGE



DIAMETER	PRESSURE
mm	bar
20	PN 16
25	PN 16
32	PN 16
40	PN 16
50	PN 16
63	PN 16
75	PN 16
90	PN 16
110	PN 16
125	PN 16
140	PN 16
160	PN 16
200	PN 16
225	PN 16
250	PN 16
280	PN 10
315	PN 10
355	PN 10
400	PN 10
450	PN 10
500	PN 10

## U-PVC BUTTERFLY VALVE



DIAMETER	PRESSURE
mm	bar
63	PN 10
75	PN 10
90	PN 10
110	PN 10
125	PN 10
140	PN 10
160	PN 10
200	PN 10
225	PN 10
250	PN 10
280	PN 10
315	PN 10
355	PN 6
400	PN 6

## ANTI-FLOODING VALVE



DIAMETER	PRESSURE
mm	bar
110	PN 16
125	PN 16
160	PN 16

# U-PVC FITTINGS

## U-PVC BUTTERFLY VALVE WITH FLANGE



DIAMETER	PRESSURE
mm	bar
63	PN 10
75	PN 10
90	PN 10
110	PN 10
125	PN 10
140	PN 10
160	PN 10
200	PN 10
225	PN 10
250	PN 10
280	PN 10
315	PN 10
355	PN 6
400	PN 6

## U-PVC ONE SIDE UNION FEMALE



DIAMETER	PRESSURE
mm	bar
16	PN 16
20	PN 16
25	PN 16
32	PN 16
40	PN 16
50	PN 16
63	PN 16
75	PN 16
90	PN 16
110	PN 16

## U-PVC BALL VALVE



DIAMETER	PRESSURE
mm	bar
16	PN 16
20	PN 16
25	PN 16
32	PN 16
40	PN 16
50	PN 16
63	PN 16
75	PN 16
90	PN 16
110	PN 16

## U-PVC BOTH SIDE UNION FEMALE



DIAMETER	PRESSURE
mm	bar
16	PN 16
20	PN 16
25	PN 16
32	PN 16
40	PN 16
50	PN 16
63	PN 16
75	PN 16
90	PN 16
110	PN 16

## U-PVC REKOR



DIAMETER	PRESSURE
mm	bar
16	PN 16
20	PN 16
25	PN 16
32	PN 16
40	PN 16
50	PN 16
63	PN 16
75	PN 16
90	PN 16
110	PN 16

## U-PVC UNION MALE



DIAMETER	PRESSURE
mm	bar
50	PN 16
63 x 50	PN 16
63	PN 16



## U-PVC CLEANERS



## U-PVC ADHESIVES

# POLYPROPYLENE PIPES AND FITTINGS

## PPR PIPES

DIAMETER	WALL THICKNESS	WORKING PRESSURE
mm	mm	bar
20	3,4	PN 20
25	4,2	PN 20
32	5,4	PN 20
40	6,7	PN 20
50	8,3	PN 20
63	10,5	PN 20
75	12,5	PN 20
90	15	PN 20
110	18,3	PN 20



## FLEXIBLE PLASTIC PIPES (ROLLED)

DIAMETER	WALL THICKNESS	
	PN 10	PN 16
mm		
20	1,9	2,8
25	2,3	3,5
32	2,9	4,4
40	3,7	5,5
50	4,6	6,9
63	5,8	-
75	6,8	-



## FIBER PIPES

DIAMETER	WALL THICKNESS	WORKING PRESSURE
mm	mm	bar
20	3,4	PN 25
25	4,2	PN 25
32	5,4	PN 25
40	6,7	PN 25
50	8,3	PN 25
63	10,5	PN 25
75	12,5	PN 25
90	15	PN 25
110	18,3	PN 25



### COUPLING

DIAMETER
mm
20
25
32
40
50
63
75
90
110



### COMBINED COUPLING MALE & FEMALE

DIAMETER
mm / inch
20 x 1/2"
20 x 3/4"
25 x 1/2"
25 x 3/4"
32 x 3/4"
32 x 1"
40 x 1 1/4"
50 x 1 1/4"
50 x 1 1/2"
63 x 2"

### COUPLING WITH MALE & FEMALE

DIAMETER
mm / inch
20 x 1/2"
20 x 3/4"
25 x 1/2"
25 x 3/4"
32 x 3/4"
32 x 1"
40 x 1 1/4"
50 x 1 1/4"
50 x 1 1/2"
63 x 2"



### REDUCING COUPLING

DIAMETER
mm
25 x 20
32 x 20
32 x 25
40 x 20
40 x 25
40 x 32
50 x 20
50 x 25
50 x 32
50 x 40
63 x 25
63 x 32
63 x 40
63 x 50
75 x 50
75 x 63
110 x 75

### COUPLING WITH LOOSE NUT

DIAMETER
mm
20
25



# PPRC FITTINGS

## ELBOW 45° / 90°



DIAMETER
mm
20
25
32
40
50
63
75
90
110

## ELBOW WITH MALE & FEMALE



DIAMETER
mm / inch
20 x 1/2"
25 x 1/2"
25 x 3/4"
32 x 1"
40 x 1 1/4"
50 x 1 1/2"

## CROSS



DIAMETER
mm
20
25
32

## BALL VALVE



DIAMETER
mm
20
25
32
40
50
63
75
90
110

## TEE



DIAMETER
mm
20
25
32
40
50
63
75
90
110

## PLUG



DIAMETER
mm
20
25
32
40
50
63
75

## TEE REDUCING



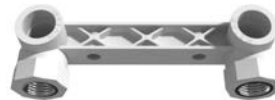
DIAMETER
mm
25 x 20
32 x 20
32 x 25
40 x 20
40 x 25
40 x 32
50 x 25
50 x 32
50 x 40
63 x 25
63 x 32
63 x 50
75 x 63

## PLUG MALE



DIAMETER
mm
15
20
25
32

## DOUBLE ELBOW



DIAMETER
mm / inch
25 x 1/2"

## TEE MALE & FEMALE



DIAMETER
mm / inch
20 x 1/2"
25 x 1/2"
25 x 3/4"
32 x 1"
40 x 1 1/4"

## CHECK VALVE



DIAMETER
mm
20
25
32

## ELBOW BYPASS



DIAMETER
mm
20
25
32

## FILTER



DIAMETER
mm
20
25
32

# PP SEWERAGE PIPES AND FITTINGS

## PP SEWAGE PIPES

### TECHNICAL SPECIFICATIONS OF PP SEWER PIPES

Diameter mm	Length and Pressure					
	0,25 m	0,50 m	1 m	2 m	3 m	6 m
50	1,9	1,9	1,9	1,9	1,9	-
75	2,2	2,2	2,2	2,2	2,2	2,2
110	2,7	2,7	2,7	2,7	2,7	2,7
160	3,9	3,9	3,9	3,9	3,9	3,9
200	-	4,9	4,9	4,9	4,9	-



#### TEE 90° / 135°

DIAMETER
mm
50
75
110
160
200



#### COUPLING

DIAMETER
mm
50
75
110
160
200



#### TEE REDUCING 90° / 135°

DIAMETER
mm
75 x 50
110 x 50
110 x 75
160 x 110



#### REDUCING COUPLING

DIAMETER
mm
75 x 50
110 x 50
110 x 75
160 x 110
200 x 160



#### ELBOW 90° / 135°

DIAMETER
mm
50
75
110
160
200



#### SIPHON

DIAMETER
mm
110



#### REVISION

DIAMETER
mm
110
160



#### CROSS 90° / 135° TRAP / TRAP 90° PLUG / PIPE CLAMP

DIAMETER
mm
50
75
110
160



**X-CORE Control Panel**

Number of stations	2, 4, 6 and 8
Type	Battery and Stationary



**NODE CONTROL PANEL**

Number of stations	1, 2, 4 and 6
Type	Stationary

**OC-15 ROTOR**

DIAMETER	SPRAY DISTANCE
cm / inch	m
5 cm / ½"	1.2-5.2
7,4 cm / ½"	1.2-5.2
10 cm / ½"	1.2-5.2
15 cm / ½"	1.2-5.2
30 cm / ½"	1.2-5.2



**PGV 1 Valve**

Size	1" (25 mm)
Flow Rate	0,05 - 9m³/h 0,7 - 150 l/min

**OC-30 ROTOR**

DIAMETER	SPRAY DISTANCE
cm / inch	m
15 cm / ½"	1.2-5.2
30 cm / ½"	1.2-5.2



**PGV VALVE 1½" & 2**

Size	1" (25 mm) 1½" (40 mm) 2" (50 mm)
Flow Rate	5 - 34m³/h 57 - 570 l/min

**DC-15 ROTOR**

DIAMETER	SPRAY DISTANCE
cm / inch	m
	1.2
	1.8
5 cm / ½"	2.4
10 cm / ½"	3.0
15 cm / ½"	3.7
	4.6
	5.2



# LAY FLAT PIPES AND FITTINGS

## LAY FLAT PIPES

### TECHNICAL SPECIFICATIONS OF LAYFLAT HOSES

Diameter mm/inch	HOSE			HI-HOSE			HD-HOSE			Roll Length
	Wall Thickness mm	Pressure (bar)	Roll Weight kg	Wall Thickness mm	Pressure (bar)	Roll Weight kg	Wall Thickness mm	Pressure (bar)	Roll Weight kg	
40 x 1 1/2"	1,25	5	22	1,45	7	24,6	1,9	10,5	31,2	100
50 x 2"	1,30	4,5	28,6	1,60	7	34,2	2,05	10,5	44,9	100
63 x 2 1/2"	1,50	4	40,2	1,70	7	44,3	2,15	10,5	57,5	100
75 x 3"	1,70	4	55,5	1,90	6	58,6	2,25	9	70,2	100
100 x 4"	1,75	4	74,5	2,30	6	89,5	2,55	9	106,3	100
125 x 5"	1,85	3	98	2,30	6	111,4	-	-	-	100
150 x 6"	1,95	3	122,5	2,60	6	152,4	2,95	7	176,7	100
200 x 8"	2,20	3	184,8	2,65	4	207,5	2,95	5	232,5	100



**LAY FLAT  
END PLUG**

DIAMETER
inch
2"
2 1/2"
3"
4"
5"
6"

**LAY FLAT  
ADAPTOR MALE**

DIAMETER
inch
2" x 2"
2" x 2 1/2"
2 1/2" x 2"
2 1/2" x 2 1/2"
2 1/2" x 3"
2 1/2" x 4"
3" x 2"
3" x 2 1/2"
3" x 3"
3" x 4"
4" x 2"
4" x 2 1/2"
4" x 3"
4" x 4"
5" x 4"
5" x 5"
6" x 5"
6" x 6"



**LAY FLAT  
COUPLING**

DIAMETER
inch
2"
2 1/2"
3"
4"
5"
6"

**LAY FLAT  
REDUCTION COUPLING**



DIAMETER
inch
2 1/2" x 2"
3" x 2"
3" x 2 1/2"
4" x 2"
4" x 2 1/2"
4" x 3"
5" x 4"
6" x 4"
6" x 5"



# ACCESSORIES



## PLANT TIE

DIAMETER
mm
3
4
5



## LAY FLAT PUNCH ECO PIPE DRILL

DIAMETER
mm
14
15
16
17



## PIPE RATCHET CLIP

DIAMETER
mm
16
20



## ECO PIPE DRILL

DIAMETER
mm
16
20



## PIPE HANGER

DIAMETER
mm
16
20



## PIPE DRILL

DIAMETER
mm
16
20



## QUICK COUPLING VALVE WITH KEY

DIAMETER
inch
3/4"



## KLINGRIT GASKET

DIAMETER
mm
32
40
50
65
80
100
125
150
200



## MANUAL PUNCH

DIAMETER
mm
2,9
16
20



## THREAD SEAL TAPE

DIAMETER
m
10
15
30

# ACCESSORIES

## HOSE RECORD GALVANIZED



DIAMETER
inch
1"
1 1/4"
1 1/2"
2"
2 1/2"
3"
4"
5"
6"



## MONOMETER

SIZE	PRESSURE
inch	bar
1/4"	PN 6
1/4"	PN 10

## SPIRAL SUCTION HOSE



DIAMETER
inch
1"
1 1/4"
1 1/2"
2"
2 1/2"
3"
4"
5"
6"



## AIR RELEASE VALVE

DIAMETER
inch
1"
2"

## SUCTION VALVE



DIAMETER
mm
63
75
110
125
160
200



## VALVE BOXES

DIAMETER
inch
6"
10"
12"
14"

## CHECK VALVES



DIAMETER
inch
1"
1 1/4"
1 1/2"
2"



## OVAL PIPE DRIPPER CLOSURE PLUG











DIAMETER
mm
16
20

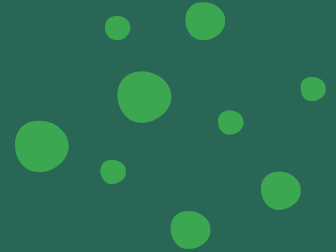
## MTT-100 MANIFOLD TEE



DIAMETER
inch
1" x 1" x 1"

# INDEX

	POLYETHYLENE PIPES & FITTINGS	3
	CORRUGATED PIPES AND FITTINGS	9
	COMPRESSION FITTINGS	10
	CLAMP SADDLES	13
	THREADED FITTINGS	14
	DRIP IRRIGATION SYSTEMS	16
	SPRINKLER SYSTEMS	27
	VALVES	31
	AUTOMATION & IRRIGATION MANAGEMENT	33
	FILTERS	36
	FERTILIZATION	41
	PUMPS	42
	U-PVC PIPES AND FITTINGS	45
	POLYPROPYLENE PIPES AND FITTINGS	50
	PP SEWERAGE PIPES AND FITTINGS	52
	AUTOMATIC SYSTEMS	53
	LAY FLAT PIPES AND FITTINGS	54
	ACCESSORIES	55





[info@agrodrip.az](mailto:info@agrodrip.az)



[www.agrodrip.az](http://www.agrodrip.az)



+99450 241 51 89



+99450 241 51 90

---